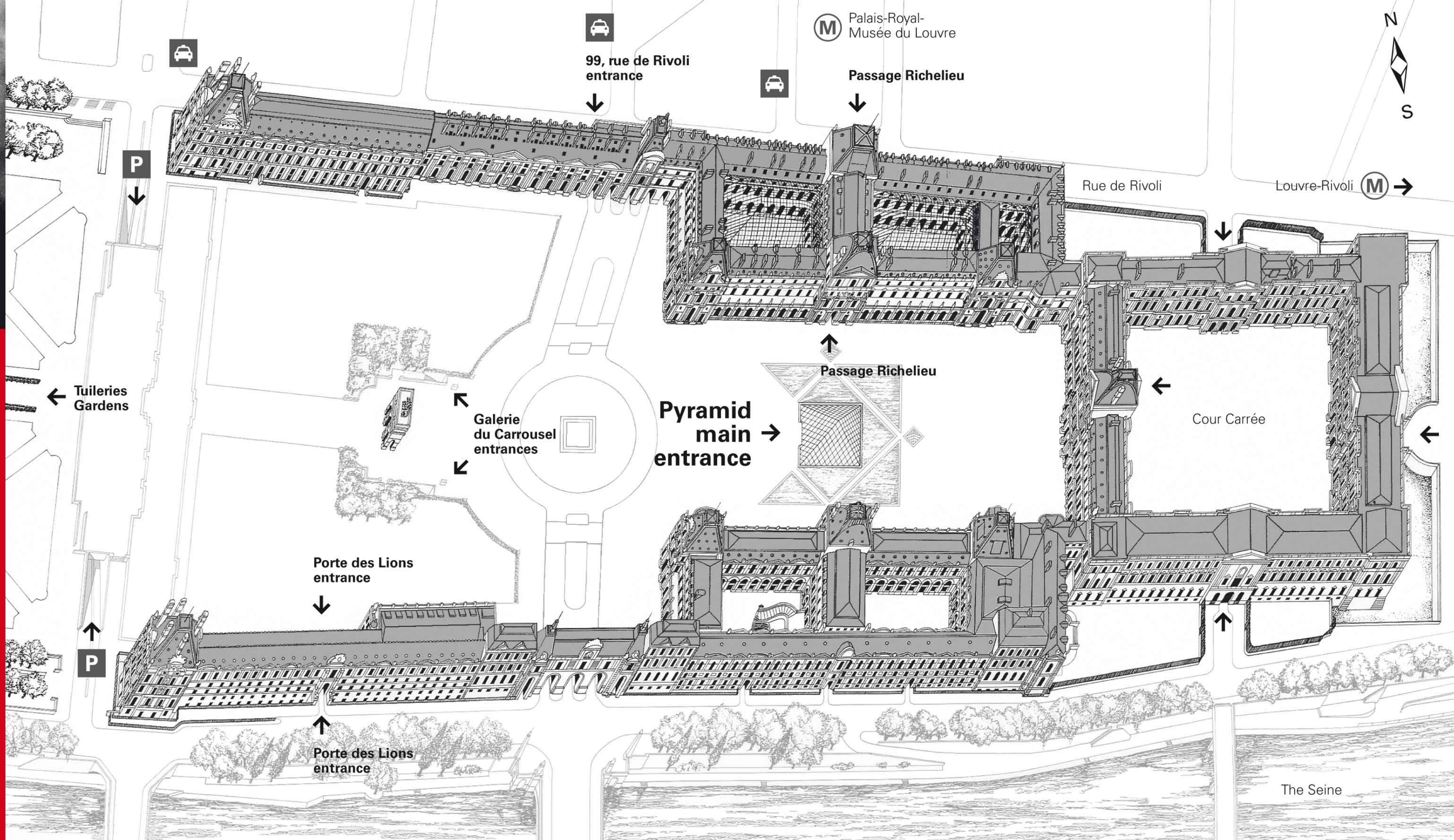


Plan / Information
English

LOUVRE



Collections

Near Eastern Antiquities

This department presents the civilizations of the ancient Middle East, which date to seven thousand years BC. They succeeded each other in Mesopotamia, Iran, and the Levant, a vast territory stretching from the Mediterranean Sea to India.

Egyptian Antiquities

Created by Jean-François Champollion, this department illustrates the art of ancient Egypt by means of two designated paths. The first is chronological, from the origins to Cleopatra, and the second is thematic, highlighting specific aspects of Egyptian civilization. Two additional sections, devoted to Coptic Egypt and Roman Egypt, round off this presentation.

Greek, Etruscan, and Roman Antiquities

This department contains works produced by three ancient civilizations: Greece, Etruria, and Rome. On the ground floor, a chronological path concentrates on marble sculptures from the 3rd millennium BC to the 6th century AD. On the first floor, the collection is organized by technique and type of material used: bronzes, jewelry, silverware, and glassware as well as terracotta figurines and vases.

History of the Louvre and Medieval Louvre

These two rooms and an archeological path present the architectural history of the palace.

Paintings

The collections in this department cover the history of European painting from the mid-13th century to the mid-19th century. They are divided into three large groups: the French school (a numerical majority), the Italian and Spanish schools, and the Northern European schools (German, Flemish, and Dutch).

Sculptures

This department encompasses European sculpture from the High Middle Ages to the mid-19th century. The collections contain French works for the most part, with a number of significant pieces from Italy, Spain and Northern Europe.

Decorative arts

The collections in this department—e.g. objects from the Middle Ages and the Renaissance, decorative arts of the 17th and 18th centuries, items from the *Diamants de la Couronne* collection belonging to the French crown, 19th-century objects and furniture, and the Napoleon III apartments—spans many different periods.

The 18th century decorative arts section is closed until 2013 due to major restorations supported by the High Museum of Art and its patrons: Mrs. Anne Cox Chambers, Accenture, UPS, Turner Broadcasting System Inc., The Coca-Cola Company, Delta Air Lines, AXA Art Insurance Corporation and The Sara Giles Moore Foundation, as well as the Cressent Circle and American Friends of the Louvre.

Arts of Africa, Asia, Oceania, and the Americas

This selection of works, on display at the Louvre since April 2000, is part of the collections from the Quai Branly museum.

Islamic Art

The department houses works from the 7th to 19th century, originating from a vast geographic area stretching from Spain to India. Some of the collection originates from the French Royal collections, other items were acquired by the museum or gifted by collectors from the second half of the 19th Century onwards. Also on view are parts of the collection normally housed by the Musée des Arts Décoratifs. A large range of techniques is demonstrated, including ceramics, metals, wood, carpets, stone, stucco, ivory, painting...

The East Mediterranean in the Roman Empire

The Roman collections from the Near East and Egypt are housed by the Louvre's three archeological departments : Oriental Antiquities, Egyptian Antiquities and Greek, Etruscan and Roman Antiquities. They are brought together in a single space in order that visitors may get a sense of the changes undergone by hellenic-influenced art and society during Roman rule.

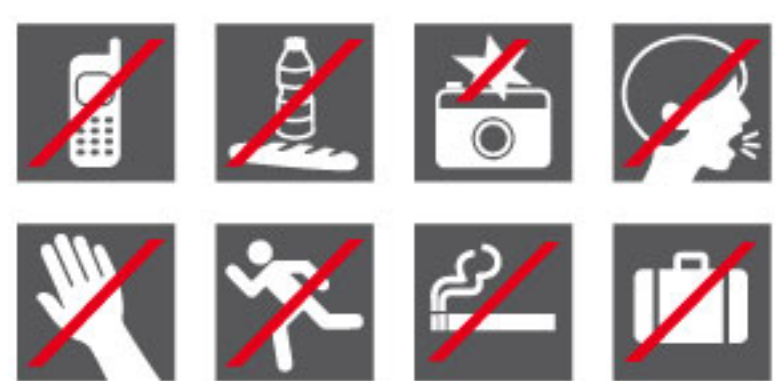
Prints and Drawings

The Prints and Drawings Department contains the collection of drawings (more than one hundred thousand works), the Edmond de Rothschild donation and the engraved plates collection. These works may be viewed privately by arrangement. Remarkably rich but extremely fragile, they are displayed in regular temporary exhibitions, as well as in the exhibition rooms of the museum on a rotational basis.

Viewing room, Department of Prints and Drawings.
Information: 01 40 20 52 51.

Find out more about the collections: www.louvre.fr

Visit rules



During your visit, you will see signs that clearly explain the six main rules governing your time in the Museum. By respecting these rules you respect the Museum collections, ensure their protection and ensure your visit and that of others is as pleasant as possible.

When viewing the Permanent Collection, both photography and film are permitted. Please do not use flash or other lighting. Filming and/or photography is not permitted within the temporary exhibitions.

Use of mobile phones, smoking, eating, drinking, loud discussions, touching the collection and running are all expressly prohibited.

Article 37 of the regulations state «Visitors must comply with instructions given to them by Museum personnel».

Latest news



2012 Cultural Program

Find out more about the season's events in the quarterly review, at the museum or online at www.louvre.fr

Visitor information

Address

Musée du Louvre,
75058 Paris Cedex 01.
Tel.: 00 33 (0)1 40 20 50 50.

Getting to the Louvre

- Main entrance by the Pyramid.
- Other entrances: the Porte des Lions entrance (direct access to the Arts of Africa, Asia, Oceania, and the Americas), the Galerie du Carrousel entrance (99, rue de Rivoli, or through the Jardin du Carrousel), and the Passage Richelieu entrance (for groups, visitors already bearing a valid admission ticket, or those headed for the auditorium).
- Metro station: Palais Royal-Musée du Louvre (Lines 1 and 7).
- Underground parking lot: from 7 a.m. to 11 p.m., avenue du Général-Lemonnier.
Tel.: +33 (0)1 42 44 16 32.
- Taxis: place du Palais-Royal.
- Buses: 21, 24, 27, 39, 48, 68, 69, 72, 81, 95.
- Batobus.
- Vélib (self-service bicycles), station numbers 1013 to 1015, 1023 and 1025.

Opening Hours

The Museum is open every day, except Tuesdays and some public holidays.

Museum Collections

Open from 9am to 6pm. Late night opening on Wednesdays and Fridays till 9.45pm. Rooms close 30 minutes prior to Museum closing. No late night opening on public holidays.

Temporary Exhibitions

- Under the pyramid (Napoléon Hall) 9am to 6pm and 9.45pm on Wednesdays and Fridays.
- In the permanent collections: As Museum opening hours.

Reception Area

- Pyramid: from 9am to 7.30pm, except Tuesdays. Open until 9.30pm on Wednesdays and Fridays.
- Porte des Lions: From 9am to 5.30pm, except Tuesdays and Fridays.

Information

A weekly timetable of room openings and closings is available at the Information Point and online at www.louvre.fr



Information desk:

Beneath the Pyramid and at the Porte des Lions entrance.
Tel.: 00 33 (0)1 40 20 53 17.



Visitors with disabilities

To leave a message:
- Tel.: 00 33 (0)1 40 20 59 90.
- handicap@louvre.fr

Visitors with impaired mobility

Wheelchairs, strollers and baby carriers are available free of charge for use while visiting the museum.
Information:
Tel.: 00 33 (0)1 40 20 53 17.

Group visits

For groups of 7 or more, a reservation must be made in advance.
Information:
- Tel.: 00 33 (0)1 40 20 57 60 (independent groups).
- Tel.: 00 33 (0)1 40 20 51 77 (groups that require a museum tour guide).

Admission prices

Tickets

Valid for entry all day. Last ticket sale 5.15pm (5pm at Porte des Lions) and 9.15pm on Wednesdays and Fridays.

Full price: €11.

Exhibitions in the Hall Napoléon: €12

Combined ticket: €15 for the permanent collections and exhibitions in the Hall Napoléon.

Free admission: Upon presentation of the appropriate supporting document, admission is free for young people under 18, job-seekers, disabled visitors and one accompanying person. Admission is free for EEC citizens under 26 and practicing teachers upon presentation of a valid «Pass education» card, excluding the temporary exhibitions in the Hall Napoléon. Admission is free for all on the first Sunday of every month.

For others free admissions contact :
00 33 (0)1 40 20 53 17.

Purchasing tickets in advance

Visitors with tickets purchased in advance do not have to wait in line and their tickets have an unlimited date of validity. Reservations can be made:

- By visiting www.louvre.fr
- At many stores in France, including: Auchan, Bon Marché, Carrefour, Cora, Cultura, Fnac, Galeries Lafayette, Leclerc, Printemps Haussmann, and Virgin...

Audioguide

- Nintendo 3DS
A selection of works and choice of routes, available in French, English, Spanish, German, Italian, Japanese and Korean.
- Mobile Apps: Iphone and Android, downloaded from www.louvre.fr

National Museum Eugène-Delacroix

6, rue de Furstenberg, 75006 Paris.
Open from 9:30 a.m. to 5 p.m. daily except Tuesdays.
Information: 00 +33 (0)1 44 41 86 50.
Tickets available to purchase on the day. Two ticket types - Permanent Collections or a dual ticket with the Louvre.

Annual membership

Louvre Cards

- Young person Louvre card (carte Louvre jeunes).
- Family Louvre card (carte Louvre familles).
- Professional Louvre card (carte Louvre professionnels).

Available from the Espace Adhésion in Allée du Grand-Louvre, from 9am to 5pm, and until 9pm during late-night opening. For more information contact : 00 33 (0) 1 40 20 51 04.

Friends of the Louvre card

(carte des amis du Louvre)
Available from the Friends of the Louvre (Société des Amis du Louvre), Allée du Grand-Louvre, from 10am to 5pm.
For more information contact : 00 33 (0) 1 40 20 53 34.

Paris Museum Pass card

(Paris Museum Pass)
Available for 2, 4 or 6 days. Access to 60 Museums and Monuments in Paris and the surrounding area. Available from the espace Adhésion.

Services and amenities



Free services

Cloakroom, locker room, wheelchair, pushchair and sling hire rental, lost property...

Free brochures

A number of designated tour paths and brochures are available at the information desk.

Activities at the Louvre

- Visits, conferences, workshops for adults and children.
- Information and registration: 00 33 (0) 1 40 20 51 77 from Monday to Friday, 9am to 5pm. Also available from the group welcome point.

- Auditorium. Conferences on Archeology and History of Art, cinema, concerts, live shows and events for the younger audience.
Information: 00 33 (0) 1 40 20 55 55.
Reservations: 00 33 (0) 1 40 20 55 00, Monday to Friday(closed Tuesdays) from 11am to 5pm.

Bookshop, boutiques and calligraphy

Art, guides, catalogues, reproductions...



Places to eat

- Cafés/tea rooms.
- Cafés/restaurants.
- Cafeteria.
- Sandwich and take-out outlets.

Tuileries Gardens

- Tel.: 00 33 (0)1 40 20 90 43.
- Free guided tour: in French every Saturday and Sunday afternoon, from April to October. Leaves at 3:15 p.m., lasts approximately 1 hour 15 minutes.
- Outdoor activities and shows.
- Librairie des jardins bookstore (place de la Concorde).
- Many places to eat.

-2 Hall Napoléon (Under the Pyramid)

Getting to the collections:

Denon wing

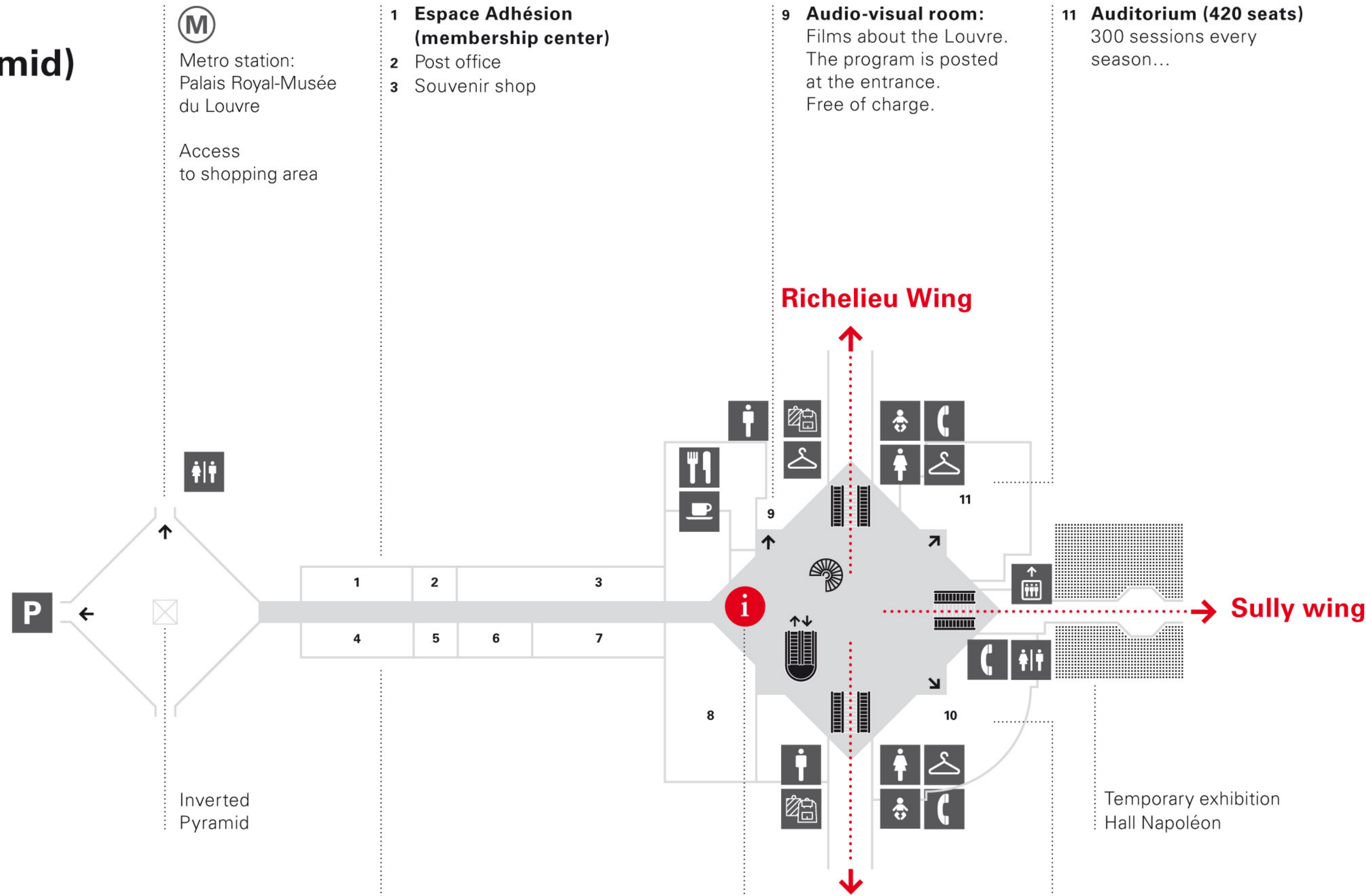
- Islamic Art
- The East Mediterranean under the Roman Empire
- Italian and Spanish Paintings
- 19th-century French Paintings
- English Paintings
- Galerie d'Apollon, the Diamants de la Couronne jewelry collection
- Italian, Spanish and Northern European sculptures
- Greek, Etruscan and Roman Antiquities
- Coptic Egypt
- Arts of Africa, Asia, Oceania, and the Americas

Richelieu wing

- 14th-17th century French Paintings
- German, Flemish and Dutch paintings (Northern European schools)
- Decorative arts (Middle Ages, Renaissance, 17th and 19th centuries)
- Napoléon III apartments
- French sculptures
- Mesopotamia and ancient Iran

Sully wing

- 17th, 18th, 19th-century French Paintings
- 17th, 18th and 19th-century Drawings and pastels
- 17th, 18th-century Decorative arts
- Greek, Etruscan and Roman Antiquities
- Pharaonic Egypt
- Ancient Iran, Arabia and the Levant
- History of the Louvre and Medieval Louvre



Metro station:
Palais Royal-Musée
du Louvre

Access
to shopping area

- 1 Espace Adhésion (membership center)**
- 2 Post office
- 3 Souvenir shop

- 9 Audio-visual room:**
Films about the Louvre.
The program is posted
at the entrance.
Free of charge.

- 11 Auditorium (420 seats)**
300 sessions every
season...

Inverted
Pyramid

Temporary exhibition
Hall Napoléon

- 4** Café featuring Louvre publications
- 5 Tickets**
- 6** Société des amis du Louvre
- 7** Shop selling items for young people
- 8 Bookstore**

- Information desk**
Reception desk
for information
and advice on visiting
the museum.

- 10 Reception desks for groups**
This is the meeting point
and point of departure for:
- Group tours (both
independent groups and
groups with a museum
tour guide)
- Activities and private tours.

American Friends of the Louvre

American Friends of the Louvre gratefully acknowledges the generous support of its Corporate Founder Members:

Air France Sotheby's

American Friends of the Louvre salutes **The Annenberg Foundation** for its major support of the development of educational tools to enable the Louvre to better serve its visitors.

American Friends of the Louvre – a not-for-profit public charity – was founded to strengthen ties between the Louvre and its American visitors. For more information or to make a donation online, go to: www.aflouvre.org

Conception graphique: Atelier Takavor / B. Pell / musée du Louvre.
Conseil artistique: P. Bernard.
Dessin de couverture: G. Nicot, architecte en chef,
conservateur du Domaine national du Louvre et des Tuileries.
Coordination: A. Giroux, musée du Louvre. Impression: 11/2012.

Crédits photographiques (p.)
Couverture du Trimestriel : ©Musée du Louvre (MdL), dist. RMN / Erich Lessing.
Niveau -1 : p. A : ©MdL, dist. RMN / Etienne Revault ; p. B : ©MdL, dist. RMN / Pierre Philibert ; p. C : ©MdL, dist. RMN / Pierre Philibert ; p. D : ©MdL, dist. RMN / Hughes Dubois ; p. E : ©MdL, dist. RMN / G. Poncet ; p. F : ©MdL, dist. RMN / G. Poncet.
Niveau 0 : p. A : ©RMN / Franck Raux ; p. B : ©MdL, dist. RMN / Christian Décamps ; p. C : ©RMN / Hervé Lewandowski ; p. D : ©RMN / Jean-Gilles Berizzi ; p. E : ©MdL, dist. RMN / Pierre Philibert ; p. F : ©Musée du Quai Branly / Hughes Dubois.
Niveau 1 : p. A : ©MdL, dist. RMN / Etienne Revault ; p. B : ©MdL, dist. RMN / Georges Poncet ; p. C : ©MdL, dist. RMN / Daniel Lebée et Carine Deambrosis ; p. D : ©MdL, dist. RMN / Erich Lessing ; p. E : ©MdL, dist. RMN / Angèle Dequier ; p. F : ©MdL, dist. RMN / Erich Lessing.
Niveau 2 : p. A : ©MdL, dist. RMN / Angèle Dequier ; p. B : ©MdL, dist. RMN / Erich Lessing ; p. C : ©MdL, dist. RMN / Erich Lessing ; p. D : ©MdL, dist. RMN / Angèle Dequier ; p. E : ©MdL, dist. RMN / Angèle Dequier ; p. F : ©MdL, dist. RMN / Angèle Dequier.

-1

Lower Ground Floor Entresol

- Islamic Art
- Sculptures
- Egyptian Antiquities
- Greek, Etruscan and Roman Antiquities
- The East Mediterranean in the Roman Empire
- Coptic Egypt
- History of the Louvre
- The Medieval Louvre
- Temporary exhibition halls



Horses of Marly,
G. Coustou



Saint Louis metal basin



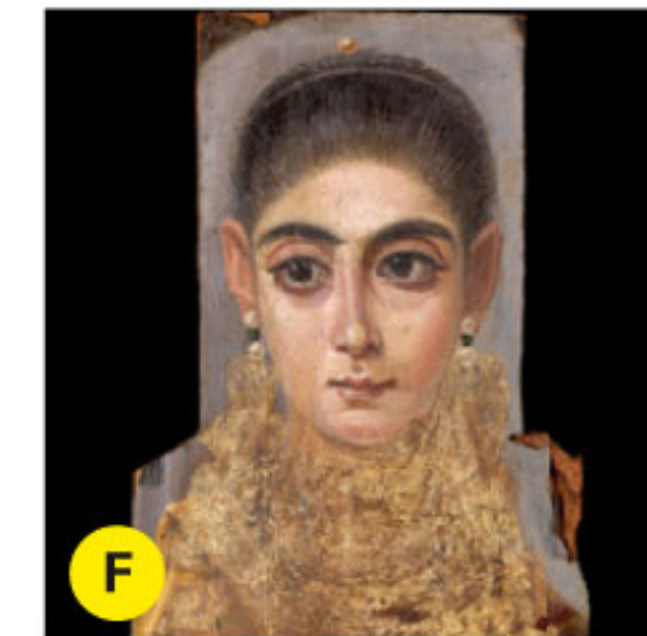
Medieval Moat



Christ and Abbot Mena

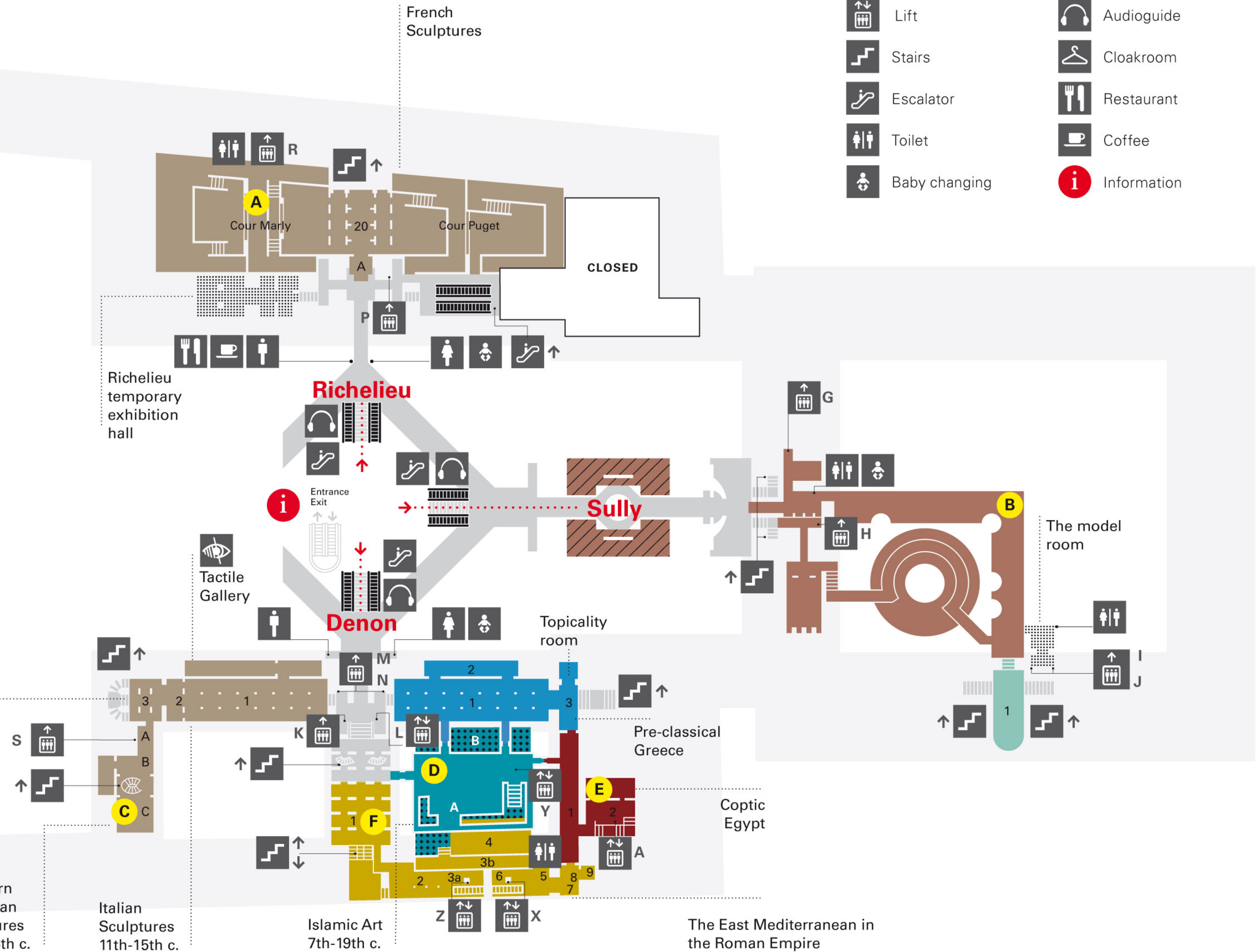


Saint Mary Magdalene,
G. Erhart



Portrait of a young woman

- Lift
- Audioguide
- Stairs
- Cloakroom
- Escalator
- Restaurant
- Toilet
- Coffee
- Baby changing
- Information



0 Ground Floor Rez-de-Chaussée

- Sculptures
- Near Eastern Antiquities
- Egyptian Antiquities
- Greek, Etruscan and Roman Antiquities
- Arts of Africa, Asia, Oceania and the Americas



A Code of Hammurabi



B Colossal Statue of Ramesses II



C Aphrodite, known as the "Venus de Milo"



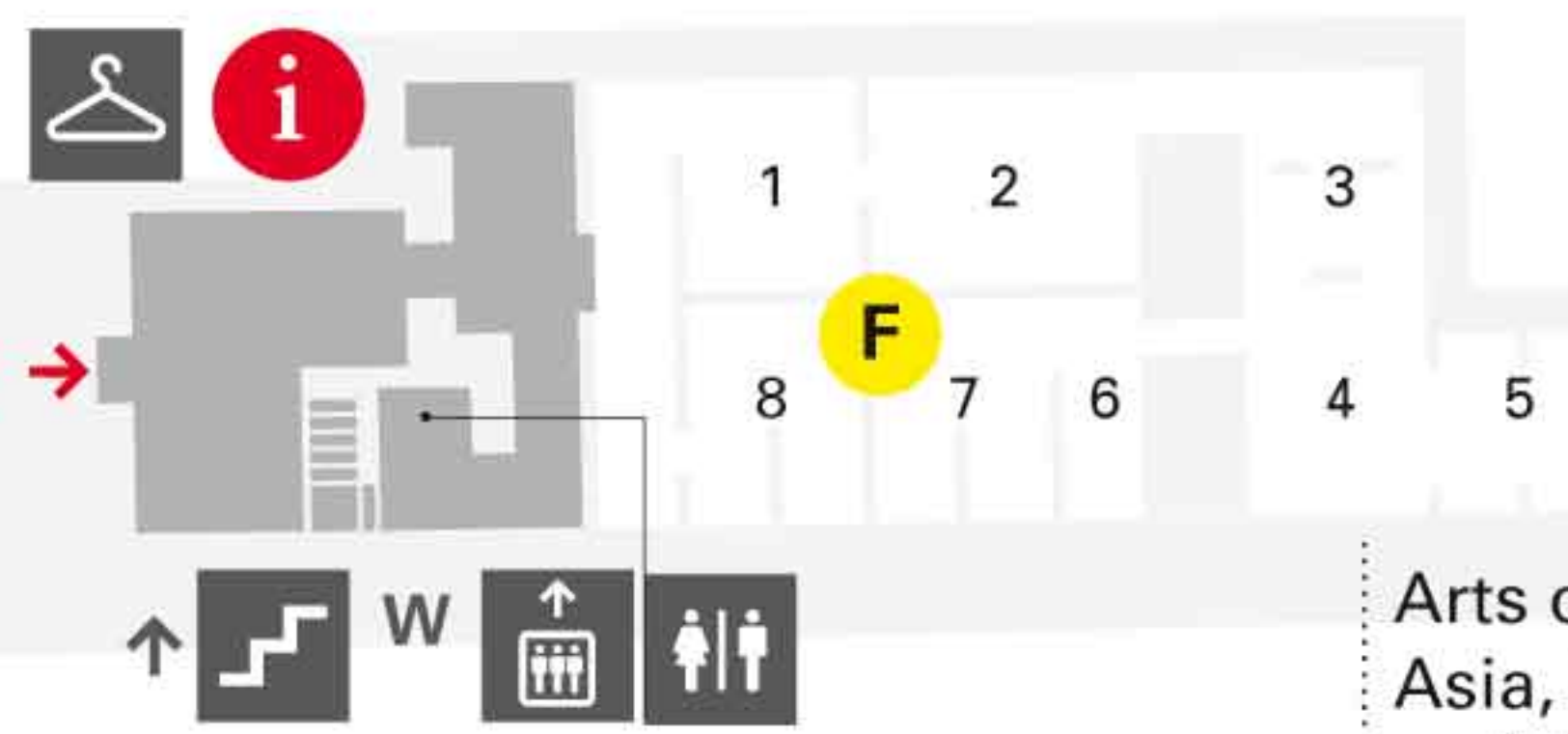
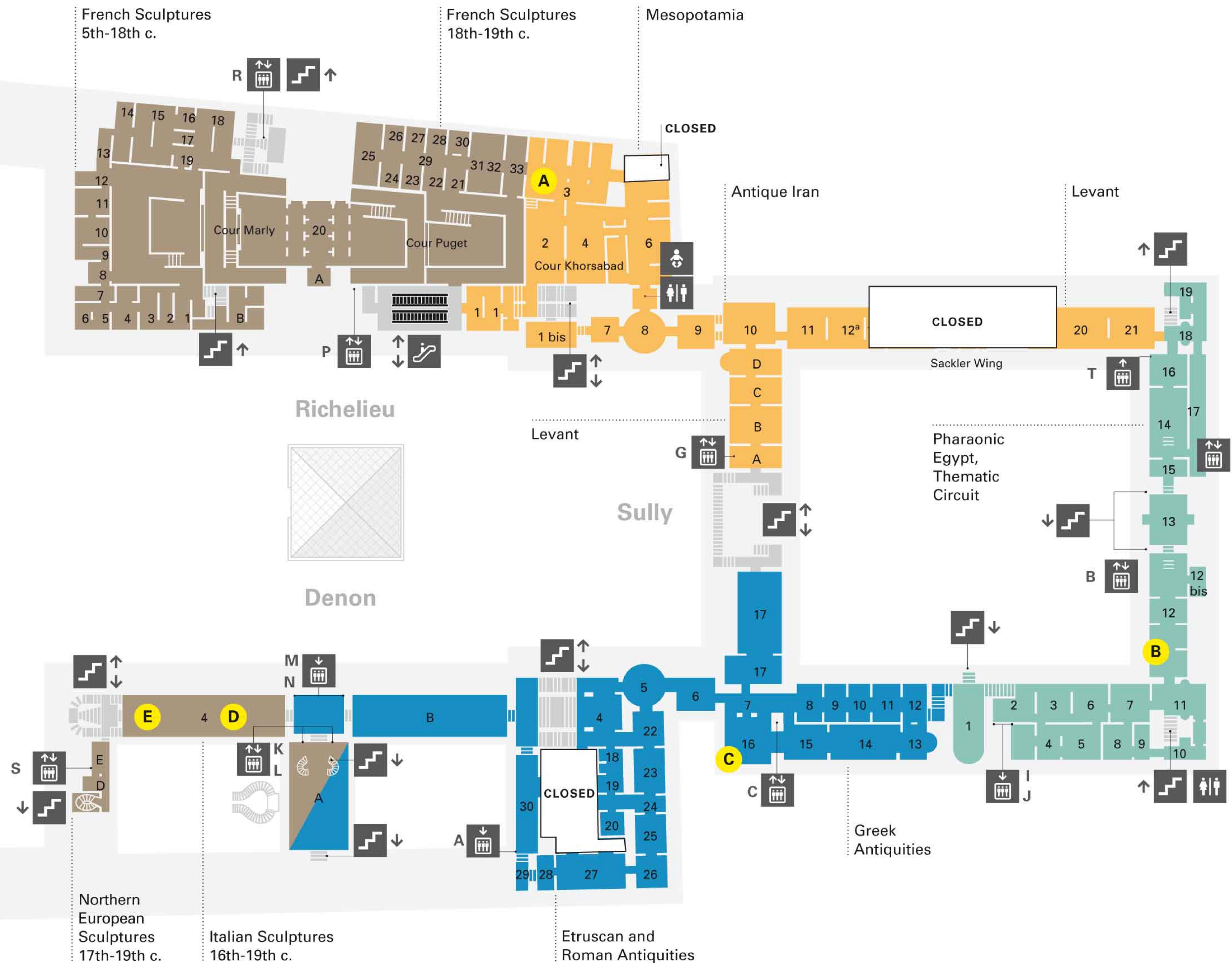
D Psyche and Cupid, A. Canova



E Captive (*The Dying Slave*), Michelangelo



F Sculpture from Chupicuaro (Mexico)



Arts of Africa, Asia, Oceania and the Americas

Northern European Sculptures 17th-19th c.

Italian Sculptures 16th-19th c.

Etruscan and Roman Antiquities

Greek Antiquities

Pharaonic Egypt, Thematic Circuit

Sackler Wing

Richelieu

Denon

Sully

Levant

Antique Iran

Levant

French Sculptures 5th-18th c.

French Sculptures 18th-19th c.

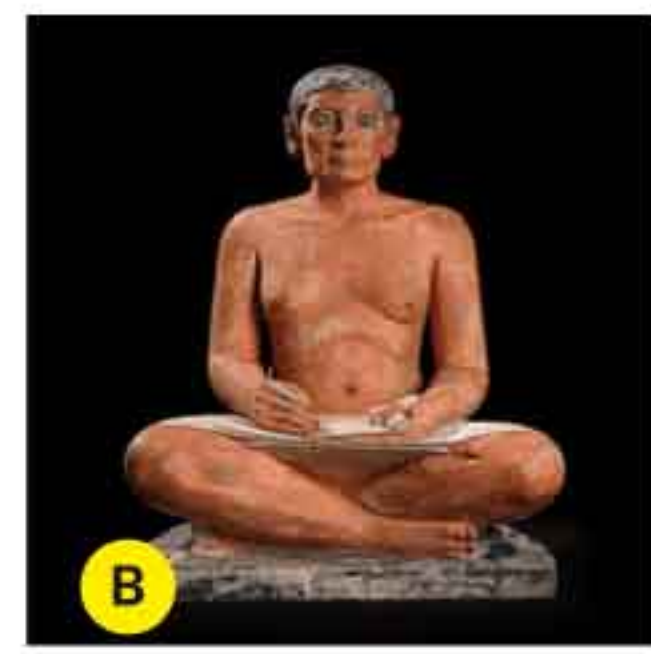
Mesopotamia

1 1st Floor 1^{er} étage

- Decorative arts
- Egyptian Antiquities
- Greek, Etruscan and Roman Antiquities
- Paintings
- Print and Drawings
- Temporary exhibition halls



A
Napoleon III Apartments



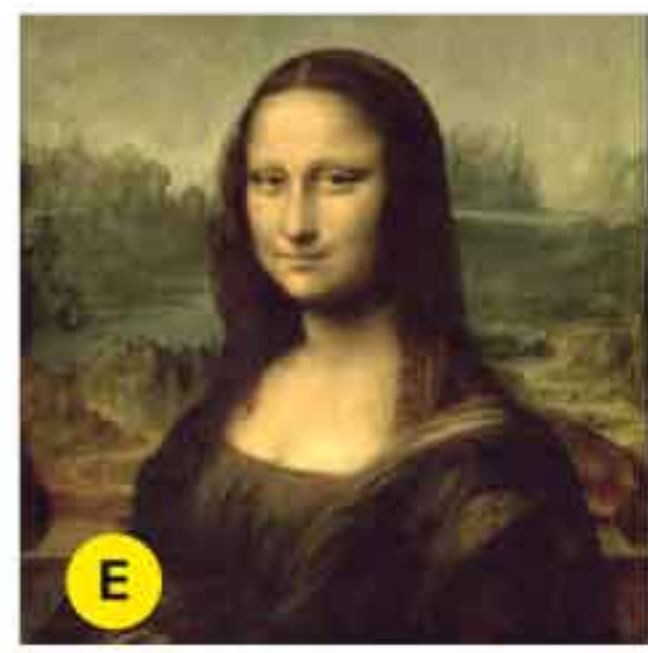
B
Seated Scribe



C
The Winged Victory of Samothrace



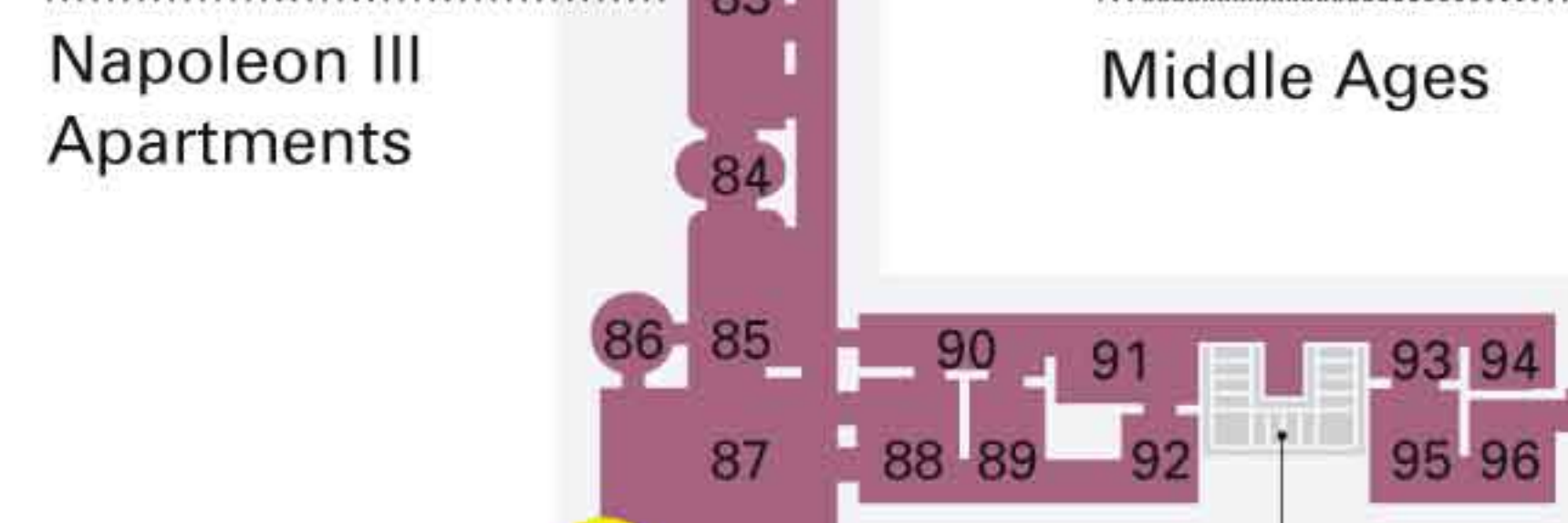
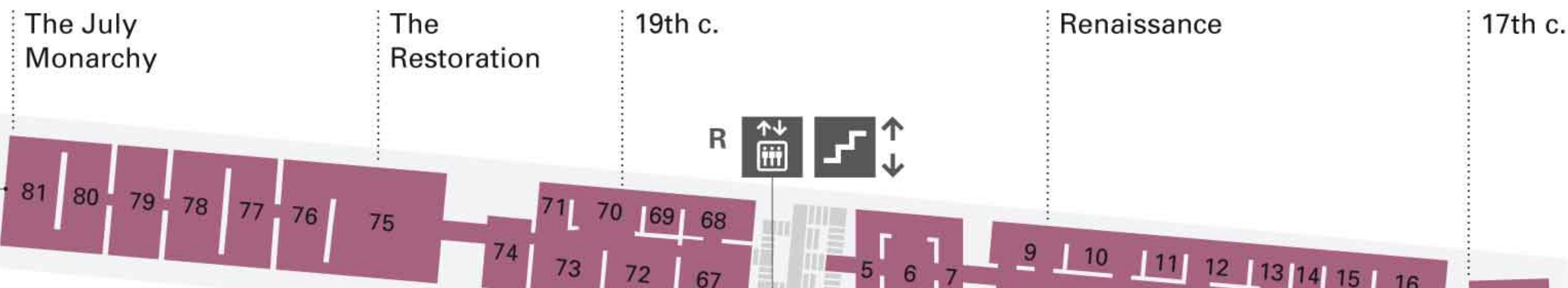
D
The consecration of the Emperor Napoleon I, J. L. David



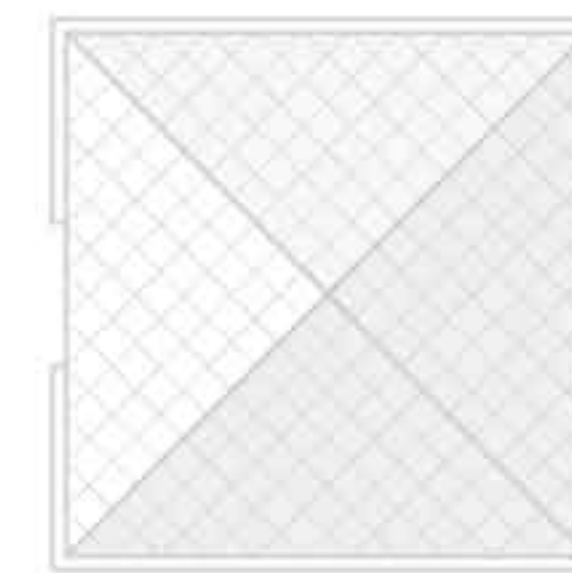
E
Mona Lisa, L. de Vinci



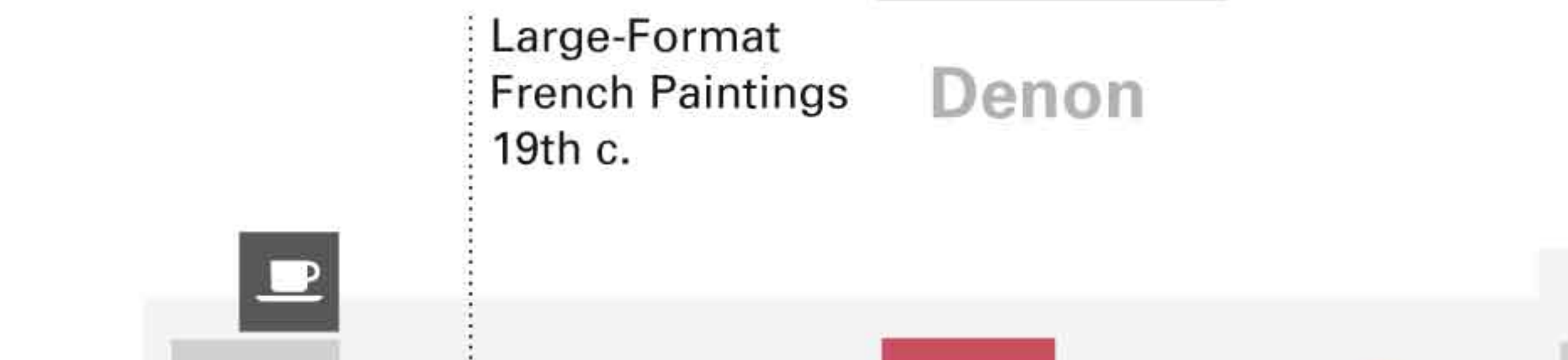
F
The Wedding Feast at Cana, Véronèse



Richelieu



Denon



Sully

La Chapelle temporary exhibition hall

Bronzes and precious Objects

Terracotta

CLOSED

Greek Ceramics

Decorative arts 17th-18th c.

Pharaonic Egypt, Chronological Circuit

Greek Ceramics

English Paintings

Current events

To Arts of Africa, Asia, Oceania and the Americas

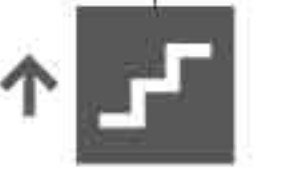
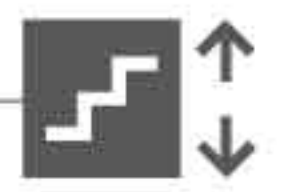
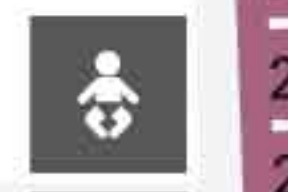
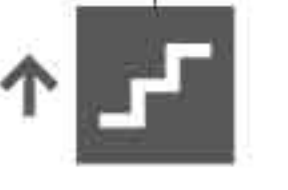
Spanish Paintings

Italian Paintings 17th-18th c.

Italian Paintings 16th-17th c.

Italian Paintings 13th-15th c.

Apollo Gallery



2

2nd Floor 2^e étage

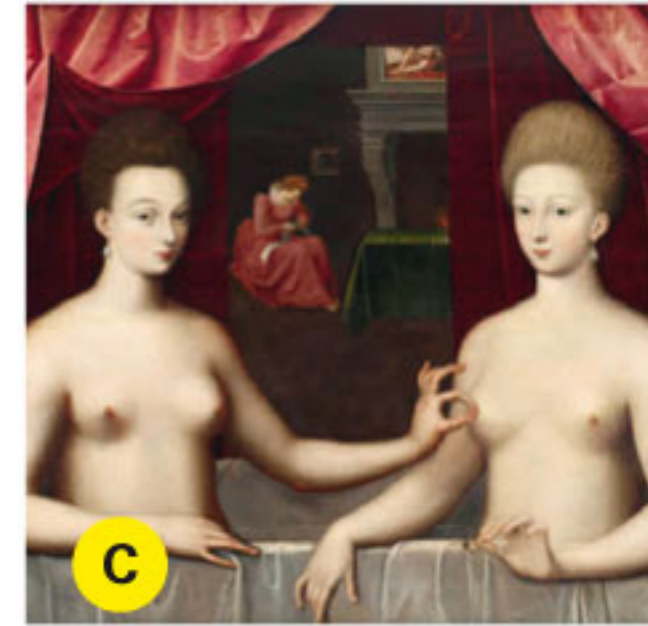
- French Paintings
- Prints and French Drawings
- German, Flemish Dutch, Belgian, Russian, Swiss and Scandinavian Paintings
- Temporary exhibition halls



A
The Lacemaker,
J. Vermeer



B
Self-Portrait,
A. Dürer



C
*Gabrielle d'Estrées
and Her Sister*



D
*The Virgin of Chancellor
Rolin*, J. van Eyck



E
The Card-Sharp,
G. de La Tour



F
The Turkish Bath
J.-A.-D. Ingres

