



Route Finder South Limburg

- > Adventure
- > Attractions
- > Culinary
- > Culture
- > Cycling
- > Going out
- > Limburg Shop
- > Marlstone caves
- > Monuments
- > Shopping
- > Walking
- > Wellness



Free!



Route Finder South Limburg

Sections

Limburg Shop > 4-5

South Limburg map > 6-7

South Limburg,
a wonderful region > 8-9

Region of castles > 10-12

Marlstone & Caves > 13

Monuments, Churches & Mills
in South Limburg > 14-23

Parks, Gardens
& Nature Reserves > 24-27

Walks, City visits
& Excursions > 28

Shopping > 29

Walking & Cycling
in South Limburg > 30-31

Museums, Galleries
& Studios > 32-33

Attractions & Sights > 34-35

Action & Sports > 36-39

River recreation
on the Meuse > 40

Body treatment
and Wellness > 41

Visiting companies > 42-43

Nightlife
& Entertainment > 44-45

Enjoying the good life
in South Limburg > 46-51

For more Tourist Information and bookings telephone number 0900-9798 (€ 1 per call) can be used within the Netherlands. If you call from abroad, use 0031-43-609 8518. Always dial 0031 first when using all telephone numbers in this brochure.
© South Limburg Tourist Information.

Group trips/MCI Phone: 043-609 8500
Fax: 043-6016640 E. info@vzv Zuidlimburg.nl
I. www.vzv Zuidlimburg.nl

Colofon

This brochure is a product of the South Limburg Tourist Information. It offers a survey of all the companies organizing day's outings, affiliated with the South Limburg Tourist Information. We have composed this brochure with the utmost care. However, all information is supplied without liability on our part.
Copyright South Limburg Tourist Information

Tourist information South Limburg

> Main office of the Tourist Information South Limburg

Walramplein 6, Postbus 820
6300 AV Valkenburg aan de Geul



> Branch offices of the Tourist Information South Limburg

> Beek > Berg en Terblijt > Bocholtz
> Born > Brunssum > Eijsden > Epen
> Eys > Geleen > Gulpen > Heerlen
> Hoensbroek > Kerkrade > Landgraaf
> Margraten > Mechelen > Meerssen
> Noorbeek > Nuth > Schin op Geul
> Schinnen > Schinveld > Simpelveld
> Sint Geertruid > Sittard > Stein
> Vaals > Valkenburg a/d Geul
> Vijlen > Voerendaal > Wijlre

The South Limburg Tourist Information, the Maastricht Tourist Information and the North and Middle Limburg Tourist Information Services together promote the province of Limburg as cooperating Tourist Information Services.



Coordination, general text South Limburg Tourist Information, department of Marketing and Events
Photography South Limburg Tourist Information; Mart Huls, Margraten; Rekker BV, Helden-Panningen; Studio BPF, Heerlen; Kerkrade Municipality, Kerkrade; Studio Creative AGT, Maastricht; Frans van Binsbergen, Sittard; Marloes Beurskens, Sittard; Combi Fothal, Venlo; Marcel van Hoon, Heerlen; Hoensbroek Castle; Miesjel van Genwen; Studiopress, Maastricht; Caverne de Geulhem, Berg en Terblijt;

Survival Limburg, ROCCA, Gulpen; Corbis; A ge Pannes Bar, Schin op Geul; Anouk Stoffels, Echt; Fresh Images, Amsterdam; Edward Frederiks, Heerlen
Cartography Anyway Productions, Heinkenszand
Graphic design Het Vormlab, Heerlen
Printing SchrijenLippertzHuntjens, Voerendaal
Main Sponsor of South Limburg Tourist Information Holland Casino Valkenburg.





The Limburg Shop

The Limburg Shops are the shops of the South Limburg Tourist Information for information and presents. These inspiring shops are specialized in topics like relaxation/ well-being, fragrant enjoyment, adventure, the outdoors and gaining impressions. Their basic aim is of course providing information, but the shops stimulate tourists more than ever now.

Natural experience!

From way back the South Limburg Tourist Information has been the pre-eminent centre for tourism and recreation. Here all possible questions can be answered. Everything you need to know about South Limburg and its environment can be found in the Limburg Shop. Information on romantic hotel arrangements, exciting attractions and signposted routes are our daily business. The adventurous holidaymaker can find outdoor sets, compasses and footstep counters in our assortment.

Regional products

An original present from Limburg? Choose one of our regional products. In our Limburg Shop you will find these high-quality products that represent all the best from Limburg. You will find Limburg delicacies such as delicious jams, fruit juices, Limburg mustard, mushrooms, Limburg tea and coffee, wines, beers and liqueurs. There is a large selection of splendid authentic products.

We gladly put you on your way...

Art of Limburg origin

Painting and ceramics of Limburg origin are not only part of the décor of the Limburg Shops, but they are also their creative challenge. Local and regional artists show their art here.

Books, films and music

To get into the South Limburg mood, we have already made a selection of the Limburg music assortment for you, of the best books on Limburg and of the best spots to be in Limburg.

Relaxation

Vitthae > The new Thermae 2000 care products on a base of marl and thermal water. These new care products include among others facial creams, body scrubs shampoo and shower gel.

Rituals > Rituals has inspiring products for body-care and the maintenance of your home. When using Rituals ordinary things become special again. The Limburg Shop has a generous supply of Rituals articles, each time with attractive promotions.

Come to the Limburg Shop and be surprised, tempted and amazed by this unique region!

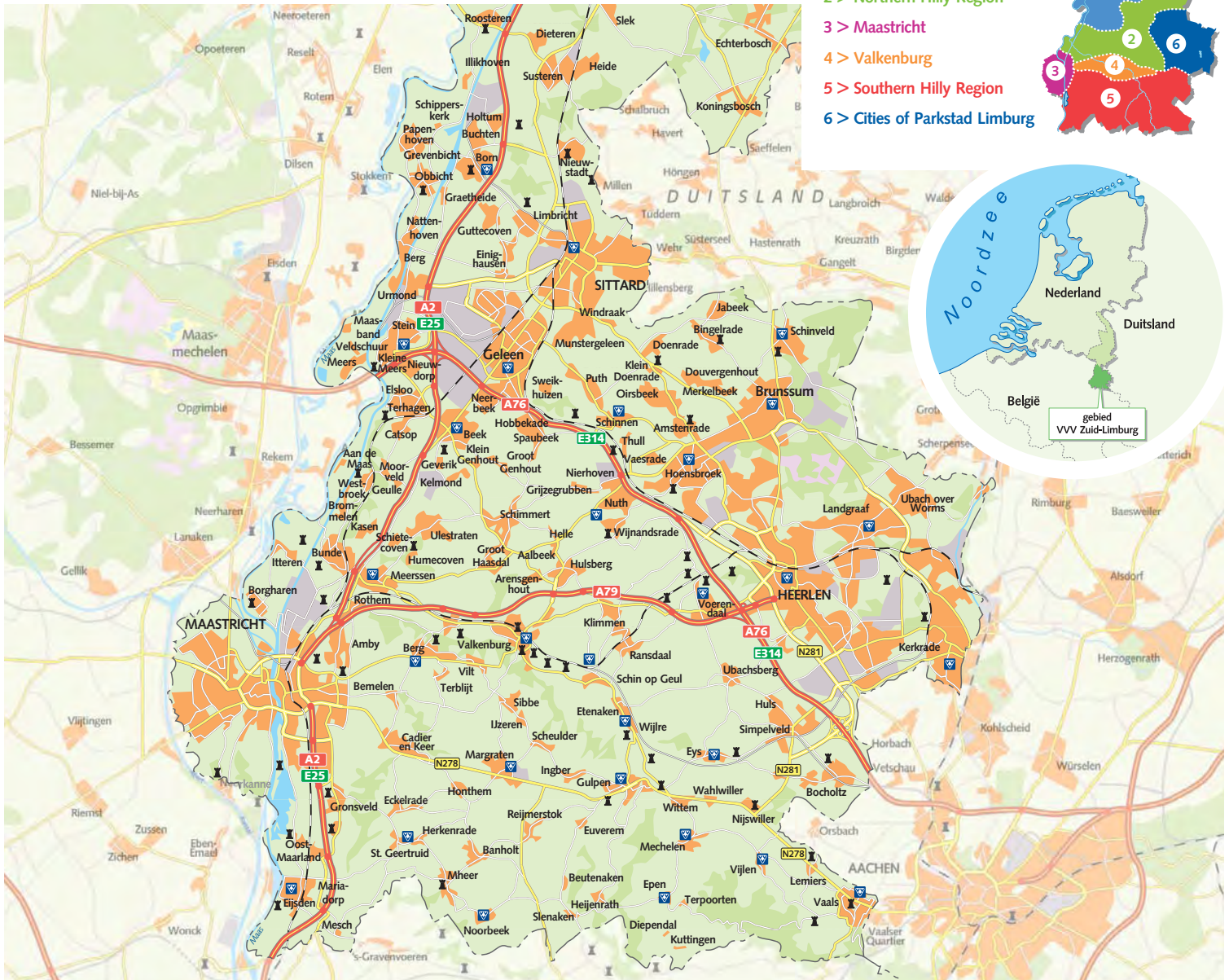
Valkenburg, Th. Dorrenplein 5, NL - 6301 DV
Epen, Julianastraat 15, NL - 6285 AG
Heerlen, Oranje Nassaustraat 16, NL - 6411 LH
Sittard, Rosmolenstraat 2, NL - 6131 HX



LIMBURG
Winkel

South Limburg Map

- 1 > Grensmaasvallei
- 2 > Northern Hilly Region
- 3 > Maastricht
- 4 > Valkenburg
- 5 > Southern Hilly Region
- 6 > Cities of Parkstad Limburg



South Limburg, a wonderful region

Valkenburg aan de Geul

With its mysterious underground surroundings Valkenburg aan de Geul has been a tourist attraction from way back. In 1853 the railway station was opened in this small city, connecting it with Maastricht and Aachen. The upper-ten in those days discovered picturesque Valkenburg by a railway line which cost a million Dutch guilders, and thus called the 'million-line'. From the top of the picturesque castle ruins the hospitable fortified small city, fitting within the palm of your hand, invites you to come and experience it. In and around Valkenburg you find a lot in a nutshell: two amusement parks, a cable lift and toboggan run, underground marlstone tunnels and museums, the most elevated castle ruins in the Netherlands, body-culture and well-being, the Holland Casino, two underground and aboveground cycling-tour adventures, exuberant restaurants, a fascinating nightlife, old castles, green parks and extensive nature reserves.

The Southern Hilly Region

In this undulating landscape nostalgic villages and town lets are tucked away among green meadows and colourful orchards. The river Geul and the rivulet Gulp that formed this landscape centuries ago ripple along quietly.



In 2005 this landscape was classified as one of the most beautiful landscapes in the Netherlands and awarded the title of 5-star landscape. The surroundings are ideal for walking and cycling for sportive people. Among others there are vineyards, breweries, a climbing and adventure centre, a subtropical swimming pool, a glassworks, the highest 'mountain' of the Netherlands (Vaalserberg, 322,5 m.) with a maze, several golf courses, outdoor Karting, stream train stations, museums and galleries, shops with regional products, cosy pubs and comfy restaurants.



Cities of Parkstad Limburg

At this moment the dynamic Limburg Urban Area is the fastest growing tourist destination. It is an area full of contrasts and extremes. The Limburg Urban Area has many unique museums, special monuments where Dutch mining history is relived. There is an annual range of cultural and sports events. A zoo can be visited and the world's largest indoor skiing track, a museum where you can participate actively, steam train stations, an amusement park, an observatory, shopping centres, enjoyable places of entertainment etc.



Northern Hilly Region and the Grensmaasvallei

The gently undulating and almost flat northern part of South Limburg, where Holland is at its narrowest, offers a unique area of vast water meadows along the river Meuse. The slightly hilly countryside of the foothills of the Ardennes is pre-eminently suitable for delightful cycling tours. Here you can find a.o. ancient churches and basilicas, museums, an animal park, an amusement park, shops, shopping centres and restaurants.

Maastricht

That life is good becomes clear when you visit this magnificent town, which is also the capital of Limburg. Within walking distance you find many shops, several museums, monuments, old pubs, exuberant restaurants, companies providing canoes and kayaks, pleasant harbours, etc.

Region of Castles

Many of the hundreds of castles that dominated the South Limburg landscape in former days have been saved and restored with much dedication. This offers the possibility for a 'civilian' to visit a 'noble fortress'. But it is also worth exploring the scenery, charmingly adorned with castles, on foot, cycling or by car.

A highlight of such a 'castle' day is of course a sumptuous dinner in one of the castle restaurants, after which a convenient castle hotel room is at your disposal. Underneath you will find a survey of castles that can be visited.

A full survey of the castles can be found in the leaflet '**Castles, parks and gardens in South Limburg**'. Several walking and cycling tours and trips by car have also been included. Ask for this complete leaflet at the Tourist Information South Limburg.

Beek

Castle and estate Genbroek (1656), Kasteel Genbroekstraat 18. The house is not open to the public but can be seen from the public park.

Berg en Terblijt

Geulzicht Castle. Vogelzang 2, 6325 PN Berg en Terblijt, T. 043-485 1950. The castle has been built in a neo-gothic style at the edge of a splendid nature reserve. Nowadays it is a hotel.

Born

Born Castle Ruins. Kasteelhof, Kasteelpark 38, 6121 XK Rijckholt, T. 046-485 1950. Caused by a fire in 1930 the castle is a ruins. Recently the ruins have been consolidated. The ruins themselves are in the middle of an animal park that can be visited.

Doenrade

Doenrade Castle (12th century). Nowadays a hotel/restaurant.

Eijsden

Eijsden Castle. Graaf de Geloësiaan 8. This 17th century castle belonged to the principality of Liege. Can be visited. More information call 043-409 1275.

Rijckholt Castle, Kasteelstraat, Rijckholt. This 18th century building has been built around the remnants of a much earlier castle, which originally had a double moat. At the moment used as a party and conference centre.

Elsloo

Elsloo Castle (17th century) Maasberg 1 In use as a hotel/restaurant.

Gulpen-Wittem

Wijlre Castle, Kasteel Wijlreweg 1, 6321 PP Wijlre, T. 043-450 2616. Wijlre castle is built in the 17th century by the lords of Wachtendonk. The inside is not on view. The Hedge House visitor centre can be visited by appointment.

Castle Wijlre



Castle Hoensbroek

Wittem Castle, Wittemer Allee 3, 6286 AA Wittem, T. 043-450 1208. Since 1100 The Lords of Valkenburg and 'Gravenvoeren lived at the castle and later the lords and then the counts of Wittem ruled over the valley of the Geul from the castle for centuries. In the Eighty-years 'War Prince William of Orange captured the castle and lived in it. Since 1958 the castle has been used as a renowned hotel/restaurant.

Heerlen

TIP Hoensbroek Castle, Klinkertstraat 118, 6433 PB Hoensbroek, T. 045-522 7272. This castle is one of the grandest and largest in South Limburg. The oldest part of the castle dates back to 1250. More than 40 chambers can be visited. Nowadays it is a museum.
Terworm Castle. Situated picturesquely in the valley of the Geleen brook. Originally from the 17th century with a gateway from 1670. Completely renovated and in use as a hotel/restaurant now.
Meezenbroek Castle (16th century), Kasteellaan 3, Heerlen. Ruins, of which only the gateway has been left. Used as a restaurant.

Kerkrade

Erenstein Castle (18th century), Oud Erensteinerweg 6, 6468 PC Kerkrade, T. 045-546 1333. Beautifully situated at the edge of the Anstel valley, nowadays in use as a restaurant.

Maastricht

Vaeshartelt Castle, Weert 9, 6222 PG Maastricht, T. 043-369 0200. Vaeshartelt castle dates from 1739. Used as a castle-restaurant.

St. Pieter fortress, Luikerweg 80. Built in 1701-1702 at the northern summit of St. Peter's mountain. By means of a spiral staircase around the well the fortress gives access to the passageways in St. Peter's mountain. Visits by guided tour.

Margraten

Mheer Castle (Dorpstraat Mheer). The castle dates from the 17th century and is still lived in. The inner courtyard is open to the public.

Nuth

Wijnandsrade Castle, Opfergeltstraat 3, Wijnandsrade, T. 045-524 1976. The castle has a splendid historical past. The complete restoration was finished in 1996. Part of it is open daily.



Castle Vaalsbroek

Schinnen

Huis ter Borch (17th century), Heisterbrug 119. Used as a pub serving meals with a pavement café.

Sittard

Limbricht Castle (1630), Allee 1, T. 046-451 444. Spacious hotel and catering establishment for theme parties.

Stein

Stein Castle, Ondergenhousweg. Ruins are being refurbished because of the construction of houses nearby. Behind the ruins is a public park.

Vaals

Bilderberg Vaalsbroek Castle, Vaalsbroek 1, 6291 NH, Vaals, T. 043-308 9308. Rebuilt by Johann Arnold von Clermont in 1761. Used as a hotel/restaurant and conference/party centre. Castle park and old orchard are open to the public.

Bloemendal Castle, Bloemendalstr. 150. Built during 1791-1795 for Johann Arnold von Clermont, designed by J. Moretti. From 1842 onwards it was a famous boarding school for girls, run by the sacred order of the Dame de Sacre Coeur. Nowadays a hotel/restaurant.

Valkenburg

East Castle, Oosterweg 36, 6301 PX Valkenburg, T. 043-609 0099. In 1587 as a castle belonging to the bailiff of the region of Valkenburg. From the oldest

part the west wing and the connecting part still remain. Nowadays used as a wedding location, assembly, party and conference centre.

Schaloen Castle, Oud-Valkenburg 5, 6305 AA Oud-Valkenburg, T. 043-407 7400. This castle is a feudal castle, built in marlstone.

St. Gerlach Castle, Joseph Corneli Allée 1 6301 KK Houthem-Sint Gerlach, T. 043-608 8888. About 1157 the knight Gerlachus settled here as a hermit. Later a monastery was founded. It was abolished in 1785. Afterwards it was a castle and it has been restored and rebuilt thoroughly to be used as a four-star hotel/apartment property with restaurant and conference amenities, an indoor swimming pool and Kneipp-spa facilities.

Valkenburg Castle Ruins, Grendelplein 13, T. 043-609 0110. The only elevated castle in the Netherlands. Medieval marlstone castle with an extensive history from 1050 to 1672, impressive great hall and chapel, magnificent view of Valkenburg and the Geul valley.

Voerendaal

Rivieren Country Estate, Retersbekerweg 88-90, 6343 PL Klimmen, T. 045-575 2622. This country estate consists of a mansion and a farmstead in U-form (mainly from 1719-1739) with a pavement café in the inner courtyard (open Saturdays and Sundays).

Castle Oost



Marlstone & Caves

South Limburg is an area where the mildly yellow marlstone comes to the surface. In particular Valkenburg and its surroundings is known for the 250 km long underground system of passageways. It is certainly worth visiting the various marlstone caves and looking for fossils in marlstone quarries. The caves have also been used to reconstruct past times; thus there is a replica of a coalmine and a reconstruction of Roman catacombs in the caves. But also less-known activities are organized underground, such as Christmas fairs, survival tours and cycling and ATB tours.

Survival Limburg

Langen Akker 33, 6325 CK Berg en Terblijt, tel. 043-364 3330

Prehistorische Vuursteenmijn in het Savelsbos bij Ryckholt,

tel. 0900-9798 (€ 1,- p.g.) or tel. 043-609 8518

TIP Icecarving.nl/mergelcarving.nl

De Steeg 30, 6333 AP Schimmert, tel. 045-524 3401

TIP Gemeentegrot,

Cauberg 4, 6301 BT Valkenburg, tel. 043-601 2271

TIP Kasteelruïne & Fluweelengrot

Grendelplein 13, 6301 BS Valkenburg, tel. 043-609 0110

TIP Mergelatelier Aarts

Daalherweg 94, 6301 BL Valkenburg, tel. 043-609 0170

TIP Romeinse Katakomben

Plenkertstraat 55, 6301 GL Valkenburg, tel. 043-601 2554

TIP Steenkolenmijn Valkenburg

Daalherweg 31, 6301 BJ Valkenburg, tel. 043-601 2491

Monuments, Churches & Mills in South Limburg

Limburg is one of the most important provinces in The Netherlands as far as monuments are concerned. In particular churches, castles and mills are out in numbers in the southern part of this province. Besides, the number of villages and farmsteads classified as protected is remarkably high.



Janssen Mill, Oirsbeek

Monuments

Beek

Beek has many monuments, such as **St. Mary's chapel** and the **Printhagen farmsteads**.

Gulpen-Wittem

Farm and country estate De Heerenhof (The Lords' Manor), Mechelen. Formerly this farmstead was an unpretentious farm with landed property. At the moment it is an infirmary for the terminally ill. The inside is closed to the public. **'t Höfke (Smallholder's Farm)**. A collection of 18th century timber-framed farms set in flowery meadows. One of these farms is owned by the Foundation for Nature Reserves and has been renovated completely. The hamlet is classified as protected.

Heerlen

The Glass Palace, built 1933-1936 (architect F.P.J. Peutz), Bongerd 18, 6411 JM Heerlen, T. 045-577 2200. The Glass Palace, centre for culture, is on the Unesco list of internationally protected monuments. Several cultural organizations have been accommodated here, like the Heerlen City Gallery, the Heerlen School of Music and the Mirror Cinema Club.

Theatres for the Limburg Urban Area.

This theatre is also called the Tuchinsky of the South.

De Luijf Residence, Wilhelminaplein 24, built in the first half of the 17th century by Jan Dautzenberg, town clerk of Heerlen. The Mining Company bought the house in 1929, after which it was passed on to the collective Coal Mines of Limburg.

Savelsberg Residence, Gasthuisstraat 45, Heerlen. This brick house dates from the 18th century. It is the former residence of Monsignor Savelsberg, founder of the convent order of the Minor Sisters of St. Joseph. The sisters made it into their nunnery later. Monsignor's Savelsberg's bed-sit room, decked out in Biedermeier style, is still in its original state.

Glaspaleis Heerlen



The Horicher farm, Corisbergweg 119a-121, Heerlen. The source of the Caumer brook is called the 'runny nose', because the water pump installed here was always leaking drops of water. In 1921 a Roman villa was excavated here.

Royal theatre, 1938, architect F.P.J. Peutz, T. Bongaerts, Stationsplein 5, Heerlen. The cinema is situated on triangular premises, wedged between two streets. **Eikhold villa**, Valkenburgerweg 72, Heerlen. Built in 1921, commissioned by J. Koster. In 1926 Queen Wilhelmina and Prince-Consort Hendrik visited him, when he was a senator temporarily. The villa is owned by the Foundation of Naturalists' Houses.

Schelmentoren (Scoundrels' Tower). Originally from the 12th century, the residential keep of the Aare lords was built of fractured stone. Since 1244 the tower has been part of the town walls. The outer stairs date mainly from the 18th century. The sheriff's courtroom was probably on the second floor. Nowadays the room is used by clubs as a meeting hall.

Roman Baths museum, Coriovallumstr. 9, 6411 CA Heerlen, T. 045-560 5100.

Dutch Mining Museum, Kloosterweg 1, 6412 CN Heerlen, T. 045-571 3965.

Hulsberg

In Hulsberg and its neighboring hamlets many **old farmhouses** are situated that today still bear witness of a proud past.

Kerkrade

Nuland mineshaft, Domanoala Mijnsstraat 30, Kerkrade, T. 045-567 0784. **Rolduc Abbey**, Heyendahlaan 82, Kerkarde, T. 045-546 6888. Ailbertus of Antoin founded the imposing abbey dwellings in 1104. For centuries it was a monastery for Augustinian canons, later becoming a seminary for priests. In the magnificent abbey church you can still see the crypt and the 18th century Rococo library, now used as a hotel and conference centre.

Landgraaf

Protected village with **monumental farmsteads** in Rimburg. **Former miners' quarters Leenhof**, almost completely renovated. **The water tower in Rimburg** will get a new destination in the future.

Maastricht

Kazematten (Casemates), entrance Waldeck bastion near the Tongerseplein. This is a maze of tunnels or mine galleries. Open to the Public.

Helpoort (Hell's Gate), St. Bernardusstraat 1. This is the only city gate left in Maastricht and it is also the oldest city gate in the Netherlands. Open to the public.



American Cemetery

Margraten

American Cemetery, Thoroughfare Rijksweg Margraten. This is the only American Second World War cemetery in the Netherlands. More than 8000 servicemen were buried here. Open daily. Each year on the last Sunday in May 'Memorial Day' is celebrated here.

Meerssen

Herenboerderij Rustenburg (gentleman farmer's residence), Bunde. This completely renovated 18th century residence and farm from 1654 has a beautiful inner courtyard at the Geulstraat. Built in regional Meuse - Renaissance style.

The Gloriette, in the Proosdij (Deanery) park, a neo-classical building from 1895, a former tea-house. Nowadays popular as a wedding location.

Het Stationsgebouw (Railway station building), Meerssen. This very picturesque, irregularly constructed building from 1901 stands out for its L-shaped upper storey with a terrace over a low, middle part and provided with richly molded crossbars in the window frames.

The Synagogue, Kuileneindestraat 22a in Meerssen. Was built about 1852 but became derelict after World War II because nearly all the Jewish people were deported from Meerssen. After restoration used as hall for a theological study group.

De Wijngaardsberg in Ulestraten is a picturesquely situated manorial farmstead. The residence around an inner courtyard consists of three wings; the fourth wing was a neo-gothic manor until 1945.

Landgoed Vliek in Ulestraten was built about 1725. Only some walls of the park side wing remain. The castle farm is situated behind the castle; opposite is a low coach house, now used as a party location.

Nuth

The protected Terstraten hamlet is worth visiting. Schimmert has dozens of old farms. **The Bocken Hof** with a tower from 1677 is a remnant of a former nobleman's dwelling. **Schimmert** has a water tower of outstanding architecture.

Schinnen

Schinnen has about 200 monuments of which the **17th century Fabritius house** is the best-known.

Schinveld

The Schinvelder Farm is a manorial farmstead from 1385 with a picturesque inner courtyard. It is used as a restaurant and party location.

Simpelveld

Railway station restaurant of the South Limburg Steamtrain Company, Station Road, Simpelveld. The former search hall (customs hall) still has its original wooden roof from the last century. Nowadays fitted out in the style of a restaurant in the early 20th century.

Overhuizen Farm, Overhuizerstraat, Bocholtz. This farm was already mentioned for the first time in a document of 1330. It has a nicely restored gateway and a capella domestica (private chapel).

Sint Gillishof (St.Gillis farm), Zandberg, Bocholtz. Built of limestone rock (probably about 1320) by the Van Bongard family with funds from gifts and donations.

Sittard - Geleen

These combined towns **have hundreds of monuments**. Underneath some monuments are dealt with in detail.

Sanderbout fortress, close to the Market Place in Sittard. In former days (15th and 16th centuries) the fortress was part of the Sittard city walls.

Agnetenwal. The town centre of Sittard is still surrounded by earthen ramparts on three sides. These ramparts were built up against the old city walls at the end of the 16th century.

Kritzaedthuis, Rosmolenstraat 2 in Sittard. This is the branch office of the South Limburg Tourist Information. The Kritzaedthuis was built in regional Meuse - Renaissance style. The house got its name from Jacob Kritzaedt, who recorded the history of the region in 1645 for the first time.

St. Janskluis at the Spaubeeklaan, Geleen. Triangular, brick closed-up building with marlstone layers and a roof window, from 1699.

Stein

Muurplaquettes (Wall tablets) at the Mauritsweg/Eburonenstraat. Four wall tablets have been fitted separately. They represent the elements of nature: flowing water, clouds, sun and light. **Graftombe Elsoo** (Monumental tomb), Op de Berg 9 in Elsloo. In the church yard there is a burial chapel of the noble De Geloës family.

Vaals

Von Clermont house, Von Clermontplein 15 in Vaals. Cloth factory and residence (both from 1761) of Johann Arnold von Clermont, now town hall.

Valkenburg

't Oud Stadhoe (The Old Town Hall), Regional museum, Grotestraat Centrum.

Spaans Leenhof (Spanish feudal estate), Th. Dorreplein. It dates from 1661 (division of the Valkenburg region into

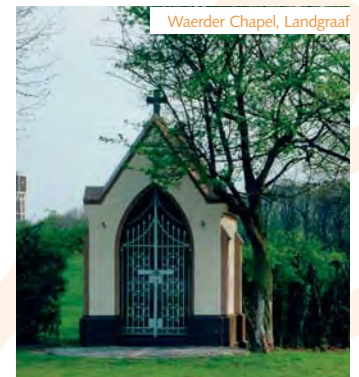
a Spanish and a Dutch part) and served as a residence of the Spanish liege. Since 1964 it has been the Valkenburg branch office of the South Limburg Tourist Information.

Memorial monument (Cauberg) This monument was erected on the Cauberg in remembrance of the fallen in the resistance during 1940-1945. At fixed times the chimes play the Limburg Anthem or the Wilhelmus.

Station building, Stationsstraat in Valkenburg. The Valkenburg railway station building has been recently put on the list of monumental buildings. The building from 1853 is the oldest station building in the Netherlands that is still in use. The splendid station, built of local marlstone, has a castle-like look because of its many turrets with crenellations.

City walls and gateways (in several parts of the city centre). Parts of the city wall can still be found in the park of Den Dalder castle and in between the Berkel gateway and the castle ruins, where part of the east wall has been preserved.

De Berkelpoort has a square form and was equipped with a drawbridge in 1416. The Grendel gateway consists of a middle part with two roundels and moreover you can see niches for statues (on both sides) over the pointed arch (14th century).



Waerder Chapel, Landgraaf

Churches

From way back Limburg had many churches, but this survey only describes the most remarkable ones. For more information on church services you can contact the South Limburg Tourist Information.

Brunssum

St. Vincent's church with monastery and vicarage, Prins Hendriklaan 378-380. Visits by appointment.

Eijsden

St. Pancras's church in Mesch still contains traces from a very far past in its nave. The north wall contains building elements from the 9th century and in the south wall even some Roman ragstones and tiles have been used. Considering this, this church might be the oldest church in Limburg.

Gulpen-Wittem

Redemptorist monastery, Wittemer Allee 32, Wittem. Church and religious bookshop 'The Signpost' and authentic monastic library where various events, expositions and concerts take place.
St. Cunibert's church, Wahlwiller. The church was mentioned in 1215 for the first time. This church is internationally famous especially for the murals and Stations of the Cross created by the well-known painter Aad de Haas.

Heerlen

St. Pancras's church, Pancratiusstr 42, Heerlen (center). A three-naves pillar basilica, built in the first half of the 12th century. The church has a rich past and went through many restorations and alterations.

Kerkrade

Kloosterkerk (Convent church at the Rolduc abbey buildings), Heyendallaan 82, from the 12th century.
St. Lambert's church, Kerkplein 7 in Kerkrade built in 1843.

Convent chapel, Pannesheiderstraat 71 in Kerkrade. Neogothical chapel from 1891.

Landgraaf

St. Joseph's church at the Kerkstraat. Village centre of Ubach over Worms is open daily.

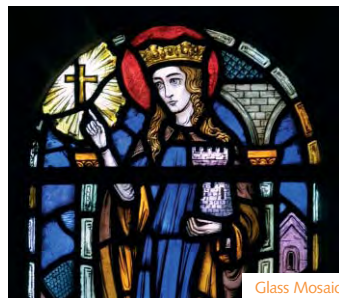
Margraten

St. Bridget's, Pley 8 in Noorbeek. The church has been dedicated to patron saint Brigida, patroness against cattle diseases. Each year, on the second Saturday after Easter, St. Bridget's pole is erected in remembrance of the feared cattle pest that raged in Noorbeek in 1634. St. Bridget was invoked to eradicate this disease and it disappeared indeed.

Maastricht

St. Servaas basilica, Keizer Karelplein. Medieval basilica with transept. It is the only church in the Netherlands that has been over the tomb of a saint (St. Servaas).

O.L. Vrouwebasiliek (Our Lady's basilica). Medieval basilica with transept, 11th century. The west building as well as the east chancel are architecturally important and unique in their kind.



Glass Mosaic



Holy Sacrament Basilica, Meerssen

Meerssen

Basiliek van het H. Sacrament (Holy Sacrament Basilica). This basilica in the market place is also called the showpiece of Meuse Gothic style. In this basilica there are magnificent stained-glass windows by the famous artist Charles Eijck.

Nuth

St. Bavo's church, Stationsstraat in Nuth was built in 1763. When building the tower it was stipulated that it should be so high that everybody in the parish would be able to hear the bells.

St. Remigius's church, Monfortstraat 2 in Schimmert with its proud tower. This church has been built on the remnants of the old church from 1832.

St. Stephanus church in Wijnandsrade.

Simpelveld

Pastorie Simpelveld (vicarage), Pastoriestraat, Simpelveld. The oldest part dated from 1683 and in 1778 the building was renovated and extended on the right side of the present gate, opposite the main entrance of the church. The window frames of natural stone from Namur in Belgium are striking.

Sittard-Geleen

Suggestion: a beautifully illustrated booklet on the churches in Sittard is for sale at the branch-offices of the South

Limburg Tourist Information.

The three churches mentioned first are open daily from May till October (2 to 4 p.m.). For other possibilities you can contact the South Limburg Tourist Information, T. 0900-9798 (€ 1,-p.c.)

St. Michael's church, Oude Markt, Sittard, T. 046-458 0636. The church front is in Flemish baroque style.

Basiliek O.L. Vrouw van het H. Hart (Our Lady's Basilica of the Sacred Heart), Oude Markt 3, Sittard, T. 046-451 7005, (no answer: 046-451 5141). Built in the 19th century as pilgrims' church for the many pilgrims who came here to worship Our Lady. It was the first church in the Netherlands to be conferred the title basilica.

St. Peter's church, situated right in the middle of the centre of Sittard. Especially known for its tower that is 80 metres high and has a carillon with 50 bells.

Nederlands Hervormde Kerk (Dutch Reformed Church), Gruizenstraat, Sittard. This is the former Protestant conventicle.

Karelhoeve, Munstergeleen. Father Charles Houben became a saint on 3 June 2007. He was called the saint of Mount Argus (Ireland) on account of his curing hands. The chapel and birthplace are open daily from 9 a.m. to 6 p.m.



Rolduc Abbey, Kerkrade

St. Salvius's church in Limbricht. In this church, which origin goes back to the 11th century, we find the oldest vault paintings of the Netherlands.

For guided tours: call 046-451 5595 (parish priest).

Schipperskerk (Bargemen's church).

The bargemen's church near Grevenbicht got its name from and was built for the barge people on the Juliana canal. Now the church is a bed-and-breakfast business and a creative centre for flower arrangement art. Concerts are given regularly. For more information: call 046-485 1597.

Vaals

Nederlands Hervormde Kerk (Dutch Reformed church), Kerkstraat 47. This church (1649) has four stained-glass windows that tell a story about a history that changed.

Hallchurch Oud Lemiers. Oldest hall church of the Netherlands (1350). The interior has been painted in an expressionist way by artist Hans Truyen.

Abbey St. Benedictusberg, Mamelis 39, Lemiers.

Valkenburg aan de Geul

H. Gerlachus church in Houthem-St. Gerlach. Three-sided hall church which nowadays is visited by many pilgrims.

H. Johannes de Doper, (Baptist's church), Oud Valkenburg. One of the oldest churches in South Limburg. The

church has been built in a Romanic style and partly dates back to the 11th century. Moreover, a special kind of Stations of the Cross can be admired. **St. Nicolaas and Barbara** in Valkenburg. Built in 1281, dedicated to two patron saints. During nearly two centuries the church was used by Protestants as well as Catholics. In the 20th century the church went through a number of drastic alterations, which made this church into one of the most beautiful monuments in the Netherlands.

Voerendaal

St. Remigius, Klimmen. The church is mentioned for the first time in 1145, but it has been in existence longer, considering the early medieval Romanic style. Throughout the ages the church has been altered regularly and that's why it changed its style frequently.

H. Bernardus, Kerkstraat 28 in Ubachsberg.

St. Laurentius in Voerendaal. The church was consecrated by pope Leo IX in 1049 and it is the only church in the Netherlands consecrated by a pope. From the original church only the Romanic tower is left. The nave dates from 1840, whereas choir and transept were built in 1915.

Sint Augustinuskerk, Elsloo



St. Hubertusmill, Beek

Mills

For information on mill opening times you can contact the **South Limburg Tourist Information.**

Beek

St. Hubert's mill, Klein Genhout, Schimmerterweg 14. A half-closed post-mill for grinding flour, from 1801. Each Wednesday afternoon in summer there are free tours, provided there is enough wind. When open, grain is ground in a traditional way. Information and entries call 046-438 9230.

Berg en Terblijt

Geulhemer mill, Geulhemmerweg 49, 6325 PJ Berg en Terblijt, T. 043-604 0449. Watermill, already mentioned in old documents in 1300, but probably dating further back. It is a hotel/restaurant/pub now.

Eijsden

Breuster mill. Open by appointment, T. 043-409 2642.

Graamolen van Eijsden (flourmill). Watermill from about 1800. Not open to the public.

Mescher mill. Flourmill from 1699. Not open to the public.

Mugge mill. Flourmill, still in operation. Not open to the public.

Windmolen Gronsveld (windmill), Rijksweg in Gronsveld. Original flourmill from 1618. Open to the public on the first and third Saturday of the month, between 10 a.m. and 4 p.m. A working mill, provided there is sufficient wind.

Gulpen - Wittem

De Volmolen, Plaatsweg 1, Epen. This historical mill has been used for a long time to full woven cloth into strong felt-like sheets. In 1872 the mill was changed into a flourmill, which it still is. The mill is open to the public. More information: www.natuurmonumenten.nl, or T. 045-563 0355, also for tours and opening times.

Winberger mill, Terpoorterweg 4, Epen is nowadays used as a restaurant. **De Bovenste molen (Upper Mill),** Epenerweg 21, Mechelen. This watermill was first mentioned in old documents about 1350. Around 1800 the Upper Mill consisted of two flourmills, of which one was changed into a paper mill in 1828. In 1979 the block of buildings was bought by the Society for the



Volmolen, Epen

Preservation of Nature Reserves. The interior of this mill cannot be visited any longer.

Pannekoekenmolen/Neuborgermolen, Molenweg 2a, Gulpen. Restored monumental flourmill from 1712 with the largest waterwheel in the Netherlands. The grain ground according to traditional methods is the main ingredient for our pancakes. We also produce 'green' (ecologically friendly) electricity from the force of the water 24 hours a day. Open to the public until 5 p.m. during the opening times of the pancake-restaurant.

Commandeursmolen, Hoofdstraat 105, Mechelen, T. 043-455 1220. Watermill from 1215, working according to traditional methods, popularly called 'the lower-lying mill' ('Onderste Molen'). Not open to the public.

Wijre watermill, Mill hole. This a former mill with two wheels, with water coming from underneath. The wall clamps indicate 1776, the year a conversion or restoration took place. Not open to the public.

Wittemer mill, Wittemer Allee 8, Wittem. This mill is situated at a branch of the Selzer brook. This branch was dug in 1731 for the drinking water supply of the monastery in Wittem. The present owner of the mill is the Limburg Landscape Society. Not open to the public.

Heerlen

Oliemolen, Oliemolenstraat 32 in Heerlen with a pavement café in summer. Open on appointment by phone call.

Weltermolen. At the rim of Welter pond, Welten neighbourhood. Open every Saturday of the month.

Maastricht

Gronsveld tower mill (1618), Rijksweg 90. This windmill still grinds flour for farmers and home-bakers. Open every first and third Saturday of the month.

Bishop's mill, Stenenbrug 1. The wheel of this watermill is to be seen from Bishop's Mill Alley. Open for groups on application, T. 043-327 0613.

Margraten

Van Tienhovenmolen in Bemelen.

Hillock flourmill from 1855. For guided tours call T. 043-601 5395.

Meerssen

De Grote Molen (Big Mill), situated on the Geul, is probably one of the oldest mills in Limburg. The Big Mill has always been used as a flourmill.

Nuth

The Hillock flourmill is a windmill and is of the type of hillock or hummock flourmills. Practically every Saturday afternoon it is a working mill and can be visited free of charge.



Janssen Mill, Oirsbeek



Schinnen

Janssen Molen, Molenweg 2, Oirsbeek, T. 046-442 1276. Open every first Saturday of the month (2 p.m.-5 p.m.).

Sittard

Ophovenmolen, Molenweg 58, Sittard (1716). T. 046-458 5993.

Nowadays the Ophovenmolen restaurant. At this mill there is also a children's farm.

Stadsbroekermolen, formerly this mill was a watermill too. Completely renovated. Open to the public. Now a catering establishment.

Stein

Standertmolen, Sijperspad 1, Urmond, T. 046-435 9393 (mw. Hounjet, Stein). The mill can be visited by groups on appointment.

Valkenburg

Four watermills on the river Geul
Schaloensmolen, Oud-Valkenburg. This watermill, dating back to 1699, formerly belonged to the estate of Schaloen castle and until the French invasion it

was the obligatory mill for the villagers. After the Second World War it became derelict but the Valkenburg Society for Nature Reserves (IVN) restored the mill. Thus it became part of the Old Valkenburg castle garden.

Oude Molen/banaalmolen, Sint Pieterstraat, Oud-Valkenburg. Watermill on the river Geul. This flourmill was already mentioned in 1244. Not open to the public.

French Mill, Lindenlaan. One of the oldest flourmills in the Netherlands. It got its name owing to the fact that a French family owned it for a very long time. Not open to the public.

Voerendaal

Molen 'Op de Vrouwenheide' (Mill on Ladies' heath), Vrouwenheide 1, Ubachsberg. A windmill with a magnificent view of the surroundings. Not open to the public.

Parks, Gardens & Nature reserves

When you think of South Limburg, you think of extensive walking areas, virgin woods and vast meadows. In particular the hilly region invites you to go on a 'voyage of discovery' into nature. But the various towns also offer splendid green refuges in their parks and gardens. Is it going to be a visit to Sittard, Heerlen or Kerkrade, a walk on Brunssum heath or a look around in one of the many parks and gardens? In South Limburg you can enjoy the scenery throughout the year in a region that looks almost foreign.

The valleys of the rivers Geul and Gulp are among the most beautiful landscapes in the Netherlands. We, in South Limburg, have already known this for a long time, but now the Society for the Protection of Nature and the Environment has awarded no less than five stars to our most beautiful part of the Netherlands. The stars were awarded for the perceptual value, the ecological value, cultural-historical value, possibilities for nature recreation and the unique character of the region. The guests as well cannot stop talking about the area: 'very authentic' and 'a top region!' are reactions from guests when they are surprised by the gorgeous views, the sunken pathways, the timber-framed farms and the rippling waters of the Geul and Gulp.

Beek

Genbroek Estate has been re-shaped in the English landscape style. The park is freely accessible.

Bocholtz

Park around De Bongard castle, designed and realized by Kragten Agency.

Brunssum

In de Struyken, Nic. Maesstraat botanical garden of the Nature Reserve Society, is situated in the area where the Ven brook has its well. Several biotopes can be found here. Information on opening times: T. 045-527 3011.

Het Pompenhuuske (The Pump Cottage), situated at a lake with 'whispering boats'. It is the place to get information on the nature and animals of the area and the history of the State Mines. Opening times in summer:

2 p.m. - 5 p.m. Information, also for groups and schools: T. 045-525 4342.

Eijsden

Eijsden castle park, Graaf de Geloeslaan in Eijsden. The gardens are freely accessible.

Eijsder water meadows: 123 acres of nature reserves, 'kept' by big horses and cows living in the wild.

Guy Wolfs, Emmastraat 4, Eijsden, T. 043-409 3181. Horticulturist company and florist's business. Magnificent courtyard garden with bric-a-brac.

Gulpen

'Van moeras tot paradijs' (From marshland to paradise), Burggraverhof 19, Gulpen, T. 043-450 1642. One and a half acres of garden with pond and sculptures of well-known Limburg artists.



Kasteel Wijlre, Kasteel Wijlreweg 1, 6321 PP Wijlre.

Heerlen

Building of the Dutch State Employees' Pension Scheme (ABP), Oude Lindestraat 70, 6401 JS Heerlen, T. 045-579 3227. Some 3000 kinds of plants on almost 15 acres of land. Open all the year round.

Aambos. Ancient wood on a slope near the centre of Heerlen, used as a promenade park with animal housing and deer park.

TIP Visitors center Brunsummerheide, Schaapskooi 99, 6414 EL Heerlen, T. 045-563 0355. Association memorials for nature.

'Huys de Dohm', Ineke Greve, De Doom 50, 6419 CX Heerlen, T. 045-571 0470.

Kerkrade

Botanical garden, Sint Hubertuslaan 74, 6467 CK Kerkrade, T. 045-541 5615. A large variety of indigenous trees, shrubs and plants of the flora of Limburg has been brought together here on nearly four acres of land.

Gaia Park Kerkrade Zoo, Dentgenbachweg 105, T. 045-567 6070. This zoo is open since 23 April 2005.

Landgraaf

TIP 'Wereldtuinen Mondo Verde' (world gardens of Mondo Verde), Groene Wereld 10, T. 045-535 0161. Here you can walk through the most beautiful gardens of the world.

Hiking areas Gravenrode and Brunssum heath.

Margraten

Wijnen tea garden, Termaar 56, 6269 AJ Margraten, T. 043-458 2606. Afternoon teas and cream teas can be served here.

Meerssen

Proosdijpark, a promenade park with pond, Gloriette (garden house) and age-old trees.

Nuth

The herb nursery of Roger and Linda Bastin, Nieuwenhuysstraat 29, 6336 XV, T. 045-523 1475, offers, around an authentic timber-framed farm, a remarkable number of known and unknown herbs.

Onderbanken

Nature reserve and recreational park Roodde Beek / Rodebach (Red Brook), crossing the border into Germany. Nature can take its own course here and it will renew itself by the presence of the brooks, the movement of the groundwater and the plants and animals that will settle here. Enjoy this park and use the criss-cross pattern of cycle tracks, footpaths and bridle paths.

Schimmert

Marni's garden plants, Op de Bies 66a, 6333 BZ Schimmert, T. 045-404 1872. This nursery is of international fame because of the perennials for private sale. The nursery is one of the top five in Europe. The spectacular, picturesque nursery garden has recently been enlisted as belonging to the Limburg cultural heritage.

Schinnen

Schinnen has several nature reserves, a.o. **Stammender wood** with good possibilities for walking and cycling.

Simpelveld

Park and sloping wood behind the local government offices in Simpelveld, designed and realized by landscape architect W. van Heukelom.

TIP Natuurtransferium Simpelveld.

An ideal start for a tour through the hilly region. Kruiweg 5, 6369 TZ Simpelveld, T. 045-544 6323.

Sittard - Geleen

De Hondskerk, Sittard: garden of the Nature Reserve Society in a recreational area. This garden comprises some 500 kinds of plants, a farmer's herb garden, beehives and further groups of plants also found throughout the region. Information number: 046-452 3597.

Sittard city park, situated within walking distance of the city centre.

Former Plinthos brickworks (on the boundary between Schinnen and Geleen). Here some societies for the preservation of nature and education about nature have their home. Nice walking routes start here too.

Born Castle Park, Kasteelpark 38, Born, T. 046-485 1950. Great walks in an animal park.

Recreational area Ten Eijsden, Eijsden 1, Geleen. Recreational area with children's farm, fishing pond and riding stables. Situated near Daniken wood.

Stein

Elsloo botanical garden, Maasberg 1, 6180 AB Elsloo, T. 046-437 3778. Entrance next to the tower of Elsloo castle. In this garden some 2200 plants have been collected from all over the world.

Molenpark (Mill park). Nature, culture and art from several continents come together in this park (art park and global sculpture garden). The 'Hat-wearers', Women in Bush, Humanity and Poetry, Ngo Hau Wha, the Gordian Knot and the Totem Pole can all be admired here.

Vaals

Castle gardens, Vaalsbroek. Splendid castle garden and unique standard-tree orchard. Freely accessible daily.

Heebrig nature garden of the society of Nature reserves. Freely accessible on Thursday nights and Sunday afternoons.



Valkenburg

Dersaborg park, Geneindestraat, Wehryweg. Public park with an impressive stock of old trees. Various coniferous and broadleaf trees, among which some rare mammoth trees.

Den Halder castle park, Wilhelminalaan. Formerly these were the hop gardens of the lord of the castle. Near the city walls there is a fine example of the rare 'Paulownia'.

Oost castle park, Oosterweg. Situated behind Oost castle. Pretty flower borders, completed with a herb garden and nursery for perennials. Moreover there is a small children's farm.

Oud Valkenburg castle garden, Oud-Valkenburgerweg, T. 046-452 4233. In this park a large number of all kinds of specimens of flora and fauna have been collected that could be found and / or can still be admired in the South Limburg landscape, but also around farms and houses. The latest, newly laid out classical old-Dutch herb garden brings the entity to perfection. The river Geul flows through the park, with Schaloen mill on its bank.

Orchid garden, Gerendal. Between old Valkenburg and Schin op Geul, behind the forester's house (2, Gerendal) you can see some twelve kinds of indigenous flowering orchids from the beginning of May to the end of June (10 a.m. - 5 p.m.), information: T. 043-459 2469.

De Graven regional park

This organization (Sittard, Geleen, Born and Schinnen region) invests in the development of nature, for instance by laying out woods and protecting brooks, slopes and sunken roads. The areas of Kollen hill, Limbrichter wood and Schwiens meadow are part of De Graven regional park. At a stone's throw from the towns you will be able to recreate in a splendid way. Information: T. 046-436 1548.

> The Nature Reserves Association protects and manages nature in the Netherlands, with nature reserves in South Limburg such as the Geul valley, the Noor valley, St. Peter's mountain, the valley of the Geleen brook, the Terworm rural estate and Brunssum heath. For more information and excursions, look at www.natuurmonumenten.nl or come to the visitor centre at Brunssum heath. Other diverse nature areas in South Limburg are owned by the Forestry Commission and the Limburg Landscape Foundation. They also acquire nature areas in order to look after and manage. Within these areas they are busy, making nature as inviting as possible for plants, animals and humans.

Walks, City visits & Excursions

Whether you like culture or nature, activities or sumptuous dining... there is so much to be seen or experienced that, without any effort, you can do something interesting each day of your holiday. We will gladly put you on your way by offering special excursions, guided tours and walks. Whether you are on your own, with a partner, family or friends... underneath you will find a survey of our offer.

Bookings via the South Limburg Tourist Information, department of Information and Bookings, telephone number 0900-9798 (€ 1,- p.g.).

Guided tours and Nature walks with a Tourist Information guide.

Walks & town and city visits

A wide range of walks are organised in South Limburg, with something for everyone, from gentle strolls to serious hikes. These include guided walks with experienced IVN-guides walks with a forester or walks following a written route and map. They all have one thing in common - they allow you to get to know some of the many facets of lovely South Limburg.

Last but not least, the **many cultural and historic towns** in the southern part of the Netherlands. They also have a great deal to offer. One of our experienced and enthusiastic guides will be happy to accompany you when you immerse yourself in the interesting history and quaint and curious pasts of places such as **Heerlen, Sittard, Vaals, Valkenburg** and **Aachen**. For example, a themed walk like the **Hap-Step Walk, a group walk with a culinary bias**. Get the best from the natural environment of the Gerendal and the Ingendaal in the company of a VVV-guide.

You can join a guided walk or set off on your own. There are plenty of maps and descriptions of walks available from any branch of the South Limburg.

Walks and products:

South Limburg Tourist Information
Tel. 043-609 8518
or surf to www.vvzuidlimburg.nl

Guided tour in Sittard



Glaspaleis, Heerlen

Shopping in South Limburg

Take a stroll through one of the attractive shopping malls, take a look at the show windows, do some shopping and then invite yourself for a cup of coffee and a slice of traditional Limburg flan or have lunch in one of the many restaurants and bistros. All part of the course in South Limburg.

The shopping malls in towns such as **Sittard, Geleen, Heerlen, Kerkrade** and **Landgraaf** are for the dedicated shopper, while the compact central shopping precincts of towns like **Beek, Brunssum, Gulpen, Vaals** and **Valkenburg** invite you to stroll and browse.

Visit **'t Loon** and **Corio Center shopping malls in Heerlen**, or the **Makado in Beek** or the smaller malls like **Op de Kamp in Landgraaf**, the **Orlando-passa-ge** and the **Wijngrachtpassage** in Kerkrade. The ideal venues for all-weather shopping, with plenty of inviting cafés where you can stop for rest and refreshment.

There is also first-rate shopping in the surroundings of South Limburg, like at the **Designer Outlet Shopping Centre** or the **Maasmechelen Village Outlet Centre** just across the Belgian border.

TIP Woonboulevard Heerlen

In de Cramer 64-198, Heerlen

TIP Designer Outlet Roermond

Stadsweide 2, 6041 TD roermond,
Tel. 0475-351 777

TIP A2 Campeercentrum

Veilingweg 13, 6247 AP Gronsveld,
Tel. 043-408 3200

TIP Koopcentrum gulpen

www.koopcentrum.nl,
Tel. 043-450 3337

Belgium

TIP Maasmechelen Village outlet

Shopping, Zetellaan 100,
3630 Maasmechelen, Belgium.
Tel. 0032-89 774 000

Walking & Cycling

For our guests we have designed an extensive offer of signposted and described walking and cycling tours. Underneath you will find a selection of the various possibilities.

Walking in South Limburg

The walks in South Limburg indicated by coloured posts consist of a sophisticated offer of signposted walking paths along the most beautiful parts of our region, varying in length from 2 to 10 kilometres. These signposted walks have been complemented with various interesting information of South Limburg and put on maps. These maps are available at our Tourist Information branches and the Limburg shops.

Signings



Thematic walks

A lot can be told about the unique flora and fauna, the many striking monuments, culture in Limburg and about interesting people in Limburg. Therefore we have developed a large range of described walking routes with stories of our region.

Walking in neighbouring Belgium and Germany

The connection of South Limburg with the rest of the Netherlands only consists of a few kilometers and for the rest it is completely surrounded by Belgium and Germany. Do you want to discover this fascinating border region easily and quickly? Then we have some nice 'Border booklets' available for you.

Long distance walking paths

Of course South Limburg also has some well-known long-distance walks.

Cycling in South Limburg

Web of cycling routes with junctions.

For the recreational cyclist we have developed a web of cycling routes with junctions. This ingenious system enables you as guest to plan your route beforehand by means of the

corresponding numbers and then cycling along in a relaxed way, just following the chosen numbers. The maps going with this web are available in all the branches of the South Limburg Tourist Information.

Thematic cycling tours

Besides the tours mentioned above, we have also charted various thematic cycling tours in South Limburg.

Classic cycling tours

South Limburg is nationally and internationally known for its many unique cycling events that take place here, such as the World Cycling Championships, the Tour de France, the Amstel Gold Race, The Most Beautiful Cycling Race in Limburg and so on. We have put these 'classic' tours on a map for you, so that you can easily cycle these tours at your own speed.

Cycling in neighbouring Belgium and Germany. Do you want to discover the German and Belgian border regions by bike from South Limburg? We have several practical maps ready for you if you want to cross the borders.

ATB-routes in South Limburg

Of course South Limburg also has an extensive signposted web of routes for ATB-cyclists. Local ATB clubs have compiled the best courses in the fields for you. You only have to follow these routes.

Bicycles for hire

On page 38-39 you will find addresses of firms that rent out and/or sell bicycles and accessories.

Route-point South Limburg

The coordination of the maintenance of signposted walking and cycling routes in South Limburg is being taken care of by the 'Route-point'. If you have any questions about a route or if something is amiss on a route, you can call the Routepoint > T. 043-609 8529, send an E-mail to routepunt@vzv Zuidlimburg.nl or fill in a form at a branch of the Tourist Information.

The South Limburg Tourist Information gladly informs you further on the routes and the region. More information can be found on our website: www.vzv Zuidlimburg.nl.



Museums, Galleries & Studios

There is an abundance of history and culture in South Limburg. The region has been a plaything of emperors, kings and bishops for centuries. At present you see the results of this in the several museums and galleries, but also here and there in the landscape. Visit a unique experience-it-yourself museum, go back to the world of the Romans, enjoy old and modern art, discover the smallest and most 'per't museum in the Euregio or have a look at a farm museum.

Ateliers/Beeldentuin Joyce Oyen-Guido Ancion, Geerstraat 8, 6456 AK Bingelrade, tel. 046-442 2120

Galerie en Beeldentuin Giardino, Rijksweg 31, 6325 AA Berg en Terblijt, tel. 043-604 2555

Kunsthandel Metanoia, Passage 8, 6441 BX Brunssum, tel. 045-525 3504

TIP Afrikacentrum - museum, Rijksweg 15, 6267 AC Cadier en Keer, tel. 043-407 7383

Streekmuseum 'De Schippersbeurs', Op de Berg 4-6, 6181 GT Elsloo, tel. 046-437 6052

Kunst en Verzamelhuis Heiderust, Julianastraat 31, 6284 AH Eperheide, tel. 06-1293 0118

TIP Galerie Art in Maupertuus, Moorveldsberg 60, 6243 CW Geulle, tel. 043-365 4474

Atelier Anja Ysermans, Oude Maastrichterweg 40, 6271 EA Gulpen, tel. 043-450 4268

De Auw Sjoekelaatfabriek/galerie/boeken-tuin, Ringweg 31, 6271 AJ Gulpen, tel. 043-450 1909

Jellie's Art, Verlorenkost 1, 6271 NS Gulpen, tel. 043-450 0135

Kunsthuis 6, Dorpstraat 6, 6271 BL Gulpen, tel. 06-1293 0118

Van moeras tot paradijs, Burggraverhof 19, 6271 HE Gulpen, tel. 043-450 1642

eXplorion-Science Center, Schaapskooiweg 95, 6414 EL Heerlen, tel. 045-522 5543

TIP Glaspaleis Heerlen, Bongerd 18, 6411 JM Heerlen, tel. 045-577 2200

TIP Nederlands Mijnmuseum, Kloosterweg 1, 6412 CN Heerlen, tel. 045-571 3965

TIP Stadsgalerij Heerlen, Bongerd 18, 6411 JM Heerlen, tel. 045-577 2210

TIP Thermenumuseum, Coriovallumstraat 9, 6411 CA Heerlen, tel. 045-560 5100

V.I.A.P. Galerie, Nobelstraat 16, 6411 EM Heerlen, tel. 045-571 6820

Galerie Atelier Art4joy, Frisostraat 44, 6433 GR Hoensbroek, Tel. 06-4128 0033

Galerie Minke Lipsch, Kleingenhoutersteeg 1, 6336 PA Hulsberg-Arensgehohut, tel. 045-405 3178

Botanische Tuin, St. Hubertuslaan 74, 6467 CK Kerkrade, tel. 045-541 6515

TIP Industrion, Museumplein 2, 6461 MA Kerkrade, tel. 045-567 0809

Ipomal Galerie en Kunstuitelen, Charles Frehenstraat 5, 6374 EK Landgraaf, tel. 045-532 3619

Atelier Jozefien Koelman/Artspectrum Events, Faliezusterpark 8, 6211 JT Maastricht, tel. 043-321 4119

TIP Bonnefantenumuseum, Avenue Céramique 250, 6221 KX Maastricht, tel. 043-329 0190



Kaat! Schilderworkshops

Old Hickoryplein 12-13, 6224 AP Maastricht, tel. 06-5136 6110

Keramik Galerie 'Groot Welsden', Groot Welsden 48, 6269 EV Margraten, tel. 043-458 2751

Atelier Ton ter Linden, Bovenstraat 13, 6255 AT Noorbeek, tel. 043-455 3066

Galerie Atelierhoeve Franscz Witte, Ransdalerstraat 37, 6311 AW Ransdaal, tel. 043-459 9045

TIP Atelier en Beeldentuin Vera de Haas, Kleverstraat 10, 6333 AB Schimmert, tel. 045-404 1723

Boerderijmuseum, Hoofdstraat 36, 6333 BJ Schimmert, tel. 045-404 2470

De kunstwinkel-kermamiegalerie, Hoofdstraat 65, 6333 BG Schimmert, tel. 045-404 2206

Galerie SchimmART, Op de Bies 2, 6333 BX Schimmert, tel. 045-404 2454

Louis Wierts Beeldhouwer Atelier-Galerie, Montfortstraat 4, 6333 BL Schimmert, tel. 045-404 1655

Nonke Buusjke, Heringsweg 5A, 6451 BP Schinveld, tel. 045-564 0782

Zuid-Limburgse Stoomtrein Mij, Stationstraat 20-22, 6369 VJ Simpelveld, tel. 045-544 0018

Galerie en Beeldentuin Peter Schuijren, Eindstraat 21, 6265 AD Sint-Geertruid, tel. 043-408 1677

Galerie Michel Knops, Steenweg 42-44, 6131 BG Sittard, tel. 046-451 0262

TIP Museum Het Domein, Kapittelstraat 6, 6131 ER Sittard, tel. 046-451 3460

Ontdekhoeke Limburg, Valkstraat 10, 6135 GC Sittard, tel. 046-452 8655

SBK Sittard, Oude Markt 1, 6131 EN Sittard, tel. 06-1356 5564

Omega Antiques & Art, Nieuwe Vliekerweg 1, 6235 NP Ulestraten, tel. 043-364 4932

Glasblazerij G. Cardinale, Tentstraat 2, 6291 BH Vaals, tel. 043-306 2596

Atelier Galerie Den Haan, Neerhem 115, 6301 CG Valkenburg, tel. 043-601 3698

TIP Kaarsenmakerij Daisy's, Plenkertstr. 8, 6301 GM Valkenburg, tel. 043-601 5347

Marx en Marx Kunst, Reinaldstraat 39, 6301 EB Valkenburg, tel. 043-601 2560

M'Expo Station Valkenburg a/d Geul, Stationsstraat 10, 6301 EZ Valkenburg, tel. 043-601 0277

Streekmuseum Land van Valkenburg, Grotestraat Centrum 31, 6301 CW Valkenburg, tel. 043-601 6394

Kasteel Wijlre / Hedge House Kasteel, Wijlreweg 1, 6321 PP Wijlre, tel. 043-450 2616

Germany

Restaurant en Bauerenmuseum Selfkant, Kämpchen 16A, D-53538 Selfkant-Tüddern, tel. 0049-2456 508291

Attractions & Sights

A day out in South Limburg... Getting up early, so that not one minute gets lost. There is so much to be done. Exciting caves and a maze, fairy-like amusement parks, zoos, restful gardens and parks, breathtaking attractions, water and snow. There are also plenty of possibilities in bad weather conditions. You need not get bored for one minute in South Limburg!

TIP Stichting Kasteelpark Born, Kasteelpark 38, 6121 XK Born, tel. 046-485 1950
MiniHaven Schutterspark, Schutterspark, Heidestraat Parkeerplaats P2, Brunssum, tel. 045-564 1341

Recreatiepark Dagstrand Oost-Maarland
 Oosterweg 5, 6245 LC Eijsden, tel. 043-409 3850

Dagje Anders-privé uitstapjes, Schoolstraat 22, 6285 BB Epen, tel. 043-455 3152
Gulpener Bierbrouwerij, Rijksweg 20, 6271 AE Gulpen, tel. 043-450 7502
ROCCA Sport & Adventure
 Landsraderweg 13, 6271 NT Gulpen, tel. 043-450 4747

Zwemparadijs Mosaqua, Landsraderweg 11, 6271 NT Gulpen, tel. 043-450 7400
Bezoekerscentrum Brunssummerheide, Schaapskooiweg 99, 6414 EL Heerlen, tel. 045-563 0355

eXplorion-Science Center, Schaapskooiweg 95, 6414 EL Heerlen, tel. 045-522 5543
Glaspaleis Heerlen, Bongerd 18, 6411 JM Heerlen, tel. 045-577 2200

Kinderstad Heerlen, Parallelweg 4, 6411 ND Heerlen, tel. 045-571 7252

Woonboulevard Heerlen
 In de Cramer 64-198 Heerlen

TIP Kasteel Hoensbroek, Klinkertstraat 118, 6433 PB Hoensbroek, tel. 045-522 7272

TIP GaiaPark Kerkrade Zoo
 Dentgenbachweg 105, 6468 PG Kerkrade, tel. 045-567 6070

Industrion, Museumplein 2, 6461 MA Kerkrade, tel. 045-567 0809

Boerengolfbaan Hoeve de Middelt
 Ondersteweg 8, 5995 PS Kessel, tel. 077-477 2274

TIP Megaland Exploitatie BV, Hofstr. 13-15, 6372 XC Landgraaf, tel. 045-531 9191

SnowWorld Landgraaf, Witte Wereld 1, 6372 VG Landgraaf, tel. 045-547 0700

Wereldtuinen Mondo Verde BV
 Groene Wereld 10, 6372 PW Landgraaf, tel. 045-535 0161

Aero Ventura Ballooning
 Hertogensingel 24, 6214 AD Maastricht, tel. 043-326 3050

Bonnefantenmuseum,
 Avenue Céramique 250, 6221 KX Maastricht, tel. 043-329 0190

Maastricht Events Company
 Alexander Beekstraat 27, 6221 CA Maastricht, tel. 043-450 6556

Maastricht Aachen Airport, Vliegveldweg 90, 6189 AD Maastricht Aachen
Rondleidingen Luchthaven Maastricht
 Maastricht Aachen Airport, tel. 045-405 1950

ASP Adventure Sport Promotion
 Oud Valkenburg 2, 6305 AB Oud Valkenburg, tel. 043-604 0675

Stichting Speeltuin Puth, Bernhardstr 21, 6155 LE Puth, tel. 046-443 5420

Designer Outlet Roermond Stadsweide 2, 6041 TD Roermond, tel. 0475-351 780

Alfa Brouwerij Schinnen, Thull 15-19, 6365 AC Schinnen, tel. 046-443 2888

Biej de Tant, Beekstraat 19A, 6451 CA Schinveld, tel. 045-527 4715

Nonke Buusjke, Heringsweg 5A, 6451 BP Schinveld, tel. 045-564 0782

Natuurtransferium Simpelveld, Kruinweg 5, 6369 TZ Simpelveld, tel. 045-544 6323

TIP Zuid-Limburgse Stoomtrein Mij
 Stationstraat 20-22, 6369 VJ Simpelveld, tel. 045-544 0018

TIP Ontdekhoek Limburg, Valkstraat 10, 6135 GC Sittard, tel. 046-452 8655

Slenaken, www.slenaken.nl
Recreatiepark Steinerbos, Dieterenstr. 17, 6171 JK Stein, tel. 046-426 8000

Boerengolfbaan de Vrouwenheide
 Mingersborg 14, 6367 JX Ubachsberg, tel. 043-459 1851

Wijngoed Fromberg, Hunsstraat 42a, 6367 JL Ubachsberg, tel. 045-575 4461

TIP Glasblazerij G. Cardinale, Tentstraat 2, 6291 BH Vaals, tel. 043-306 2596

TIP Labyrint Drielandenpunt/Taverne de Grenssteen, Viergrenzenweg 97, 6291 BM Vaals, tel. 043-306 5200

Agogo Valkenburg BV/ Wilhelminatoren
 Neerhem 44, 6301 CJ Valkenburg, tel. 043-609 0609

Bowling Valkenburg, Oosterweg 5, 6301 PX Valkenburg, tel. 043-601 4076
Copacabana B.V., Grotestraat Centrum 43-45, 6301 CV Valkenburg, tel. 043-601 4974

Gemeentegrot, Cauberg 4, 6301 BT Valkenburg, tel. 043-601 2271

TIP Stadsrondritten Valkenburg
 Van Heinsberglaan 33, 6301 VH Valkenburg, tel. 043-601 4941

Holland Casino, Kuurpark Cauberg 28, 6301 BT Valkenburg, tel. 043-609 9600

Kasteelruïne & Fluweelengrot
 Grendelplein 13, 6301 BS Valkenburg, tel. 043-609 0110

Mergelatelier Aarts, Daalhermerweg 94, 6301 BL Valkenburg, tel. 043-609 0170

M'Expo Station Valkenburg a/d Geul
 Stationsstraat 10, 6301 EZ Valkenburg, tel. 043-601 0277

TIP Pretpark De Valkenier
 Koningswinkelstraat 53, 6301 WH Valkenburg, tel. 043-601 2289

Romeinse Katakomben, Plenkertstraat 55, 6301 GL Valkenburg, tel. 043-601 2554
Sprookjesbos, Sibbergrubbe 2a, 6301 AA Valkenburg, tel. 043-601 2985

Steenkolenmijn Valkenburg
 Daalhermerweg 31, 6301 BJ Valkenburg, tel. 043-601 2491

Thermae 2000, Kuurpark Cauberg 27, 6301 BT Valkenburg, tel. 043-609 2000

Boscafé 't Hijgend Hert, Harles 23, 6294 NG Vijlen, tel. 043-306 2499

Belgium

Maasmechelen Village Outlet Shopping, Zetellaan 100, B-3630 Maasmechelen, tel. 0032-8977 4000

Germany

Restaurant en Bauerenmuseum Selfkant
 Kämpchen 16A, D-53538 Selfkant-Tüddern, tel. 0049-2456 508291



Action & Sports

Sporting together in an pleasant way. Being busy in an active and relaxing way. All this is possible in South Limburg. Besides walking, cycling and swimming, there are plenty of possibilities for f.i. (miniature)golf, gliding, hot-air balloons, ATB-cycling, bowling, riding, Karting, riding quads, inline-skating, skiing, climbing or abseiling.

- TIP** Pelsers Target Events, Keerweg 4, 6176 BN Beek, tel. 046-437 3024
- TIP** Kanoverhuur Maastricht, De Steeg 2, 6268 NK Bemelen, tel. 043-407 1954
- TIP** Organisatieservice Passe Partout, Gasthuis 71-73, 6268 NN Bemelen, tel. 043-604 1021
- TIP** Survival Limburg/Hotel de Lange Akker, Langen Akker 33, 6325 CK Berg en Terblijt, tel. 043-364 3330
- MiniHaven Schutterspark**, Heidestraat, Parkeerplaats P2, Brunssum, tel. 045-564 1341
- Golfbaan Het Rijk van Margraten**, Bemelerweg 99, 6267 AL Cadier en Keer, tel. 043-356 9999
- TIP** Recreatiepark Dagstrand Oost-Maarland, Oosterweg 5, 6245 LC Eijsden, tel. 043-409 3850
- Dagje Anders-privé uitstapjes**, Schoolstraat 22, 6285 BB Epen, tel. 043-455 3152
- Laco Glanerbrook**, Kummenaedestraat 45, 6165 BT Geleen, tel. 046-474 6988
- Indoor Skischool 2000**, Vouershof 7, 6161 DB Geleen, tel. 046-474 4265
- Mw. Lotte Reintjens Fiets- en Wandeltochten**, Gloriët 4, 6247 BB Gronsveld, tel. 06-5150 1725
- House of Balance**, Landsraderweg 9, 6271 NT Gulpen, tel. 043-457 3299
- ROCCA Sport & Adventure**, Landsraderweg 13, 6271 NT Gulpen, tel. 043-450 4747
- Bowling en Party Hoeve de Aar**, Welterlaan 45, 6419 CN Heerlen, tel. 045-571 4432
- Klimcentrum Neoliet**, Stadionbaan 52, 6416 CS Heerlen, tel. 045-542 4358

- Boerengolfbaan Hoeve de Middelt**, Ondersteweg 8, 5995 PS Kessel, tel. 077-477 2274
- TIP** SnowWorld Landgraaf, Witte Wereld 1, 6372 VG Landgraaf, tel. 045-547 0700
- Aero Ventura Ballooning**, Hertogensingel 24, 6214 AD Maastricht, tel. 043-326 3050
- TIP** Kajak Maasland, Bosscherweg-grens (wijk 19) Maastricht, tel. 0032-8971 7390
- TIP** Kajak en Rafting Tour Limburg, Postbus 2014, 6201 CC Maastricht, tel. 0032-8961 4424
- TIP** Maastricht Events Company, Alexander Beekstraat 27, 6221 CA Maastricht, tel. 043-450 6556
- Hèt Feestburo**, Peelderpad 8, 6438 HK Oirsbeek, tel. 06-3006 0603
- TIP** ASP Adventure Sport Promotion, Oud Valkenburg 2, 6305 AB, Oud Valkenburg, tel. 043-604 0675
- FB Events**, Velkenskamp 1, 6097 NN Panheel, tel. 0475-579 080
- Stichting Speeltuyn Puth**, Bernhardstr 21, 6155 LE Puth, tel. 046-443 5420
- TIP** Party Bowling Centrum Schin op Geul, Walem 7, 6342 PA Schin op Geul, tel. 043-459 3436
- Biej de Tant**, Beekstraat 19A, 6451 CA Schinveld, tel. 045-527 4715
- TIP** Natuurtransferium Simpelveld, Kruinweg 5, 6369 TZ Simpelveld, tel. 045-544 6323
- Stardust Bowling- & Partycentrum**, Rijksweg Zuid 240, 6134 AG Sittard, tel. 046-452 3111
- TIP** Nordic Walking Limburg, Leentstr. 39, 6171 ID Stein, tel. 06-1075 4595



- Recreatiepark Steinerbos**, Dieterenstr 17, 6171 JK Stein, tel. 046-426 8000
- Greetzz Ballonvaarten**, Oudenboschstr 31, 5043 SX Tilburg, tel. 013-571 3025
- Boerengolfbaan de Vrouwenheide**, Mingersborg 14, 6367 JX Ubachsberg, tel. 043-459 1851
- Fredair Ballonvaarten Vaals-Limburg**, Aan de Noot 9, 6291 VV Vaals, tel. 043-306 5619
- Labyrint Drielandenpunt/ Taverne de Grenssteen**, Viergrenzenweg 97, 6291 BM Vaals, tel. 043-306 5200
- TIP** Landal Hoog Vaals, Randweg 21, 6291 DC Vaals, tel. 043-306 8383
- TIP** Outdoor Karting Vaals VOF, Selzerbeeklaan 23, 6291 HV Vaals, tel. 043-306 1866
- Bowling Valkenburg**, Oosterweg 5, 6301 PX Valkenburg, tel. 043-601 4076
- Fietsen in Valkenburg**, Neerhem 34, 6301 CH Valkenburg, tel. 043-601 5404
- Holland Casino**, Kuurpark Cauberg 28, 6301 BT Valkenburg, tel. 043-609 9600
- Huifkarren en Koetsenverhuur Sabrina**, Gatsestraat 5, 6301 AZ Valkenburg, tel. 043-601 1860

- TIP** Jut & Jul Producties, Daalhemerweg 142, 6301 BM Valkenburg, tel. 043-601 6142
- TIP** Agogo Valkenburg, Neerhem 44, 6301 CJ Valkenburg, tel. 043-609 0609
- TIP** Paradijsvogels Boerengolf & Buitenactiviteit, Hopschet 6, 6294 BL Vijlen, tel. 043-306 4951
- Speed 4 All**, Industrieweg 13, 6321 BP Wijre, tel. 043-450 0015

Riding stables

- Manege Jo van Houthem**, Grote Bosweg 12, 6276 PK Heijenrath, tel. 043-457 3328
- Manege 'De Blauwe Steen'**, Blauwe Steen 11a, 6363 CB Wijnandsrade, tel. 045-524 1811

Sports, Fitness and Health

- Body Fit Bunde**, Meidoornlaan 1a, 6241 BN Bunde, tel. 043-364 5493
- Harry Driessen Running Centre**, Oranje Nassaustraat 19, 6411 LE Heerlen, tel. 045-571 2009
- Sport- en Recreatiecentrum Polfermolen B.V.**, Plenkertstraat 50, 6301 GM Valkenburg, tel. 043-601 6173

Fishing

Fishing license purchase at the **VVV Zuid-Limburg** in Valkenburg and Landgraaf, tel. 0900-9798 (€ 1 p.g.)

Bocholtz: HSV Bocholtz, Stevensweg and at the South-East end of Rijksweg 76, tel. 06-2154 8501.

Eijsden: along the Maas from Maastricht till Visé.

Geleen: recreation area Ten Eijsden.

Heerlen: Weltevijver (at the Weltermolen) tel. 045-574 0649.

Heerlen: Palemigerboord, Henri Jonasstraat, Heksenberg, Klinkertstraat, De Doom Welte, Kastellaan (Meezenbroeker vijvers), De Rousch, Heidserpark, Droomvijver De Caumen. Klimmen: Trout farm, Landgoed Rivieren, Retersbekerweg 88-90, 6343 PL Klimmen, tel. 045-575 2622.

Kerkrade: Kasteelgracht Erenstein, oude roeivijver, de vijver in het Hamdal, tel. 045-545 415.

Landgraaf: Kasteelruïne Kasteelweg (HSV Ons Zuiden), Kapelweien (HSV De zuid-oost oosthoek Rimborg), Kasteel Strijthagen (HSV Strijthagen), Landgoed hotel/ restaurant de Overste Hof, more information tel. 045-531 2809.

Schinnen: Mulderplas, Thull.

Schinnen: Oude Markt, tel. 046-443 1376.

Schinnen: near to Kasteel Terborgh, Heisterburg.

Hengelsportvereniging Vissen in Nuth, Hiltstraat 11, tel. 045-524 1506.

Simpelveld: HSV Simpelveld, tel. 06-422 7489.

Sittard: Roeivijver Schwienswei, De Driepoel Tel. 046-451 8770.

Sittard: Roeivijver Stadspark Sittard.

Vaals: Visvijvers at Landal Green Parks Hoog Vaals, tel. 043-306 8383.

Valkenburg: Geulpark. Information accessible at the VVV Zuid-Limburg, Th. Dorrenplein 5, tel. 043-609 8600.

Voerendaal: Vijver 't Broek, Mergelweg. **Wijlre:** fish pond with for example carps, breams and roaches. Additionally carps will be spread out weekly during the months June, July and Augustus. Behind

Kasteel Wijlre, more information tel. 043-450 3109.

Wijlre: HSV De Springende Beekfoel, Valkenburgerweg 77, 6321 GB Wijlre, tel. 045-531 28090.

Wijnandsrade: Hengelsportvereniging. Information: De Ping 4 in Nuth, tel. 045-524 3432.

Hengelsport John Backers, Akerstraat Noord 152, 6431 HR Hoensbroek, tel. 045-522 5999.

Swimming

Zweparadijs Mosaqua, Landsraderweg 11, 6271 NT Gulpen, tel. 043-450 7400

TIP Zweparadijs Otterveurdt, Gravin von Schönbornlaan 2, 6433 AZ Hoensbroek, tel. 045-523 2626

Recreatiepark Steinerbos, Dieterenstr 17, 6171 JK Stein, tel. 046-426 8000

TIP Sport en Recreatiecentrum Polfermolen B.V., Plenkertstraat 50, 6301 GM Valkenburg, tel. 043-601 6173



Bicycles for hire & Bicycle firms

Lemmen Tweewielers, Wal 2, 5944 AW Arcen, tel. 077-473 2190

Tweewielers Leon Lemmens VOF Maastrichterlaan 1, 6191 AA Beek, tel. 046-451 0262

Rijwielverhuur 't Zinkvooltje, Plaatweg 10, 6285 NK Epen, tel. 043-455 2731

Profile Wijnen, Op de Vey 60, 6165 CD Geleen, tel. 046-474 2966

Rijwielverhuur Herben, Looierstraat 48, 6271 BB Gulpen, tel. 043-450 1360

ROCCA, Rijwielverhuur in 't Heuvelland Landsraderweg 13, 6271 NT Gulpen, tel. 043-450 4747

Stichting E-Avantis, Snelliuss 6, 6422 RM Heerlen, tel. 045-550 6590

Rijwiel Cash & Carry, Akerstraat Noord 182, 6431 HS, Hoensbroek, tel. 045-522 2000

John Willemsen Bikes, Heigank 30, 6373 KR Landgraaf, tel. 045-531 2545

Fietsverhuur Heuvelland, Strucht 14, 6305 AH Schin op Geul, tel. 043-459 3130

TIP Cycle Center Tweewielerverhuur De Valkenberg 8b, 6301 PM Valkenburg, tel. 043-601 5338

Belgium

Hotel Mergelhof Golf, Rue de Terstraeten 254, B-4851 Gemmenich, tel. 0032-8778 9280

Maastricht-Biking.com, Maasdijk 2, B-3620 Lanaken, tel. 06-1783 8728

TIP Green Valley Boerengolf Varn 5, B-3793 Teuven-Voeren, tel. 0032-4794 32111

Ardennen Discovery Route du Congres de Polleur 90, B-4910 Theux, Tel. 0032-8730 7738



Recreation on and along the river Meuse

For the lover of water recreation there is also a lot to experience here. The Meuse and the water-recreation area north of Eijsden (on the river Meuse) make watersports possible in South Limburg. Both beginners and experts will find plenty to enjoy, as well as the less athletic visitors.

For a special cycling or walking tour along the water you have to be at the Grensmaas (Meuse border area). This is the meandering part of the Meuse with a lot of gravel between Roosteren and Maastricht. In this area there are no barrages, so that there is quite a difference between high and low levels of the water. The great dynamism caused by this produces a unique part of the Netherlands!

At the South Limburg Tourist Information several maps of the cycle-routes web are available, with which you can explore this beautiful area along the Meuse extensively. It is easy to find your way in the cycle-route web. The ferryboats on the Meuse in Berg aan de Maas and Eijsden have also been included in this system.

For more information call 0900-9798 (€ 1,- p.c.) or: www.vvzuidlimburg.nl

Body treatment & Wellness

Indulging body and mind in one of the diverse wellness-centers to be found in South Limburg. From bathing in '40.000-year young water' to undergoing a treatment with curative herbs. Visiting a sauna or massages also go with this, just like a wholesome and balanced meal!

Reikicentrum Landgraaf, Ridder Vosstr. 14, 6441 SZ Brunssum, tel. 045-532 4357
House of Balance, Landsraderweg 9, 6271 NT Gulpen, tel. 043-457 3299
Chateau St. Gerlach, Kneipp kuurfaciliteiten, Joseph Corneli Allée 1, 6301 KK Houthem- St. Gerlach, tel. 043-604 2444
Instituut Bergeanne, Drievogelstraat 149a, 6466 GK Kerkrade, tel. 045-571 1636

Bilderberg Kasteel Vaalsbroek, Vaalsbroek 1, 6291 NH Vaals, tel. 043-308 9308
Organisatiebureau Saphira, Hekerweg 42, 6301 RH Valkenburg, tel. 045-405 3807
Parkhotel Rooding, Neerhem 68, 6301 CJ Valkenburg, tel. 043-601 3241
TIP Thermae 2000
Kuurpark Cauberg 27, 6301 BT Valkenburg, tel. 043-609 2000

Visiting Companies

Looking, experiencing and tasting, who doesn't like this? Wine, beer, liqueur, chocolate, apple juice and treacle. The companies mentioned below offer you guided tours (on appointment) to show you the ropes of their products and companies.

More information on guided tours? Then call 0900-9798 (€ 1,- p.g.) or consult the monthly paper 'UITCourant South Limburg'.

Brouwerij Heeren van Beeck

Burg. Janssenstraat 26, 6191 JC Beek, tel. 046-428 0414

D'r Brikke Oave

Lindeplein 5a, 6444 AT Brunssum, tel. 045-525 6868

Reikicentrum Landgraaf

Ridder Vosstraat 14, 6441 SZ Brunssum, tel. 045-532 4357

Afrikacentrum - museum

Rijksweg 15, 6267 AC Cadier en Keer, tel. 043-407 7383

Domein Le Coq Frisé, Gulperweg 2, 6285 NA Epen, Tel. 043-455 1989

Domein Aldenborgh

St. Agathastraat 3, 6287 AJ Eys, tel. 043-451 1927

TIP A2 Campeercentrum

Veilingweg 13, 6247 EP Gronsveld, tel. 043-408 3200

Mw. Lotte Reintjens Fiets- en

Wandeltochten, Gloriët 4, 6247 BB Gronsveld, tel. 06-5150 1725

Gulpener Bierbrouwerij

Rijksweg 20, 6271 AE Gulpen, tel. 043-450 7502

Van moeras tot paradijs

Burggraverhof 19, 6271 HE Gulpen, tel. 043-450 1642

Parkstad Limburg Theaters Heerlen

Burgemeester van Grunsvenplein 145, 6411 AS Heerlen, tel. 045-571 6607

Instituut Bergeanne

Drievogelstraat 149a, 6466 GK Kerkrade, tel. 045-571 1636

Industrion

Museumplein 2, 6461 MA Kerkrade, tel. 045-567 0809

Parkstad Limburg Theaters Kerkrade

Theaterpassage 2, 6461 DV Kerkrade, tel. 045-571 6607

Bemelerhof

Bemelerweg 320, 6226 NE Maastricht, tel. 043-407 1904

TIP Bisschopsmolen

Stenenbrug 1-3, 6211 HP Maastricht, tel. 043-327 0613

MECC Maastricht

Forum 100, 6229 GV Maastricht, tel. 043-383 8383

Rondleidingen Luchthaven Maastricht

Maastricht Aachen Airport, tel. 045-405 1950



Vineyard Fromberg, Ubachsberg



Brewery de Fontein, Stein

Icecarving.nl/mergelcarving.nl

De Steeg 30, 6333 AP Schimmert, tel. 045-524 3401

Boerderijmuseum

Hoofdstraat 36, 6333 BJ Schimmert, tel. 045-404 2470

Eco-Wijndomein St. Mauritius

Graafstraat 8, 6305 BE Schin op Geul, tel. 043-459 2295

Stokhemer Wingert

Doodemanweg, 6305 BH Schin op Geul, tel. 043-459 1918

TIP Alfa Brouwerij Schinnen

Thull 15-19, 6365 AC Schinnen, tel. 046-443 2888

Canisius-Henssen BV

Nagelbeek 6-8, 6365 EK Schinnen, tel. 046-443 1212

Zuid-Limburgse Stoomtrein Mij

Stationstraat 20-22, 6369 VJ Simpelveld, tel. 045-544 0018

Chocolade Rousseau

Langs de Hey 11, 6136 KR Sittard, tel. 046-451 9282

Philamunt

Handelsstraat 34a, 6135 KL Sittard, tel. 046-420 1650

TIP Brouwerij De Fontein

Ondergenhousweg 15, 6171 GW Stein, tel. 046-426 2858

Nordic Walking Limburg

Leentstraat 39, 6171 ID Stein, tel. 06-1075 4595

Geitenboerderij Holle Bolle Geit

Heerkuil 1, 6265 NB St. Geertruid, tel. 043-408 2173

Centrum voor Natuur en Milieueducatie

Westelijke Mijnstreek, Daniken 1, 6174 RA Sweikhuizen, tel. 046-475 8423

Wijngoed Fromberg

Hunsstraat 42a, 6367 JL Ubachsberg, tel. 045-575 4461

Kaarsenmakerij Daisy's

Plenkertstraat 8, 6301 GM Valkenburg, tel. 043-601 5347

Fietsen in Valkenburg

Neerhem 34, 6301 CH Valkenburg, tel. 043-601 5404

Mergelatelier Aarts

Daalhemerweg 94, 6301 BL Valkenburg, tel. 043-609 0170

Rabobank Valkenburg a/d Geul

Berkeplein 220, 6300 AB Valkenburg a/d Geul, tel. 043-609 9500

Paradijsvogels Boerengolf &

Buitenactiviteiten, Hopschet 6, 6294 BL Vijlen, tel. 043-306 4951

Wittemer Wijngaard Wahlwiller

Einderstraat 9, 6286 BJ Wahlwiller, tel. 043-451 2241

Belgium

Green Valley Boerengolf

Varn 5, B-3793 Teuven-Voeren, tel. 0032-4794 32111

Nightlife & Entertainment

The versatility of South Limburg also appears from the large offer of places of entertainment. You can try your luck in the casino, visit a theatre or cinema, or swing on the dance-floor of a discotheque. We offer you nice suggestions for a pleasant night out until the early hours!

Theatres and cinemas

H5 Theaters, Geleenstraat 9, 6411 HP Heerlen, tel. 045-571 3030

Parkstad Limburg Theaters Heerlen
Burgemeester van Grunsvenplein 145, 6411 AS Heerlen, tel. 045-571 6607

Parkstad Limburg Theaters Kerkrade
Theaterpassage 2, 6461 DV Kerkrade, tel. 045-571 6607

Theater Landgraaf, Kerkberg 4, 6374 ES Landgraaf, tel. 045-531 0929

Filmhuis Het Domein, Kapittelstraat 6, 6131 ER Sittard, tel. 046-451 3460

Stadsschouwburg Sittard-Geleen
Mgr. Claessensstraat 2, 6131 AJ Sittard, tel. 046-452 4400

Openluchttheater/Pixiedust Producties
Plenkertstraat 51a, 6301 GL Valkenburg, tel. 043-601 2581

Entertainment

Brouwerij Heeren van Beeck

Burg. Janssenstraat 26, 6191 JC Beek, tel. 046- 428 0414

Pelsers Target Events, Keerweg 4, 6176 BN Beek, tel. 046-437 3024

Organisatieservice Passe Partout
Gasthuis 71-73, 6268 NN Bemelen, tel. 043-604 1021

La Caverne De Geulhem

Wolfsdriesweg 7, 6325 PM Berg en Terblijt, tel. 043-604 1000

Hotel-café-zalen de Geulhemermolen
Geulhemmerweg 49, 6325 PJ Berg en Terblijt, tel. 043-604 0449

Casino Brunssum, Treebeekplein 133, 6446 VK Brunssum, tel. 045-521 1537

D'r Brikke Oave, Lindeplein 5a, 6444 AT Brunssum, tel. 045-525 6868

Laco Glanerbrook, Kummenaedestraat 45, 6165 BT Geleen, tel. 046-474 6988

TIP Bowling en Party Hoeve de Aar, Welterlaan 45, 6419 CN Heerlen, tel. 045-571 4432

Kookpodium, Heerlerweg, 160-6, 6433 HX Hoensbroek, tel. 045-528 5505

Van Melick PartyCatering, Hoofdstraat 78, 6432 GG Hoensbroek, tel. 045-522 9244

TIP Bozzini Deluxe BV, Roda JC Ring 3, 6466 NH Kerkrade, tel. 045-521 1090

TIP Fair Play Centers BV, Winckelen 1, 6467 JD Kerkrade, tel. 045-542 8428

Rodahal Kerkrade, Europaplein 1, 6461 AA Kerkrade, tel. 045-567 9230

Café en Zalencentrum De Brandpoort, Hoogstraat 191, 6373 HS Landgraaf, tel. 045-531 5515

Kookstudio Jan van den Bongard

Edisonstraat 21, 6372 AK Landgraaf, tel. 045-569 1530

Megaland Exploitatie BV, Hofstraat 13-15, 6372 XC Landgraaf, tel. 045-531 9191

Kasteel Limbricht, Allee 1, 6141 AV Limbricht, tel. 046-451 4444

A Table, Lyonnetstraat 14, 6221 AP Maastricht, tel. 043-325 6576

MECC Maastricht, Forum 100, 6229 GV Maastricht, tel. 043-383 8383

Hèt Feestburo, Peelderpad 8, 6438 HK Oirsbeek, tel. 06-300 60603

FB Events, Velkenskamp 1, 6097 NN Panheel, tel. 0475-57 9080



Party Bowling Centrum Schin op Geul
Walem 7, 6342 PA Schin op Geul, tel. 043-459 3436

Alfa Brouwerij Schinnen, Thull 15-19, 6365 AC Schinnen, tel. 046-443 2888

Stardust Bowling- & Partycentrum
Rijksweg Zuid 240, 6134 AG Sittard, tel. 046-452 3111

Brouwerij De Fontein, Ondergenhousweg 15, 6171 GW Stein, tel. 046-426 2858

à Propos Producties bv, Postbus 42, 6114 ZG Susteren, tel. 0800-022 4870

Siterhof, Bergstrasse 27, D-52538 Tuddern-Hillenberg,

Tel. 0049-2456 509650

Labyrint Drielandenpunt/Taverne de Grenssteen, Viergrenzenweg 97, 6291 BM Vaals, tel. 043-306 5200

Agogo Valkenburg BV/ Wilhelmintoren
Neerhem 44, 6301 CJ Valkenburg, tel. 043-609 0609

TIP Bowling Valkenburg, Oosterweg 5, 6301 PX Valkenburg, tel. 043-601 4076

Copacabana B.V., Grotestraat Centrum 43-45, 6301 CW Valkenburg, tel. 043-601 4974

Dancing Ahoy, Koninginneweg 1, 6301 GS Valkenburg, tel. 043-601 5323

De Feestgrot, Daalhemmerweg 31a, 6301 BJ Valkenburg, tel. 043-601 4738

Jut & Jul Producties, Daalhemmerweg 142, 6301 BM Valkenburg, tel. 043-601 6142

TIP Holland Casino, Kuurpark Cauberg 28, 6301 BT Valkenburg, tel. 043-609 9600

Kasteel Oost / Restaurant La Diva
Oosterweg 36, 6301 PX Valkenburg, tel. 043-609 0099

Kookschool Pit, Neerhem 69, 6301 CE Valkenburg, tel. 043-459 1842

Boscafé 't Hijgend Hert, Harles 23, 6294 NG Vijlen, tel. 043-306 2499

Cabs

ABC Taxi, Burg. Van Meeuwenstraat 15, 6191 NB Beek, tel. 046-423 1010

Taxibedrijf Van Loo, Rijksweg 198a, 6271 AH Gulpen, tel. 043-450 4050

Taxi, auto en motorrijdschool Piet Herinx, Warburgstraat 11, 6372 CH Landgraaf, tel. 045-532 3232

Taxibedrijf Bert Timmermans
Humcoverstraat 124, 6231 JS Meerssen, tel. 043-364 8000

Taxicentrale Haagmans, Nieuweweg 18, 6301 ET Valkenburg, tel. 043-601 5555

Coach companies

Touringcarbedrijf Van Meurs, Waalbroek 5, 6369 TE Simpelveld, tel. 045-544 2776 (only on reservation).

Lindetours B.V., Lindelauffer Gewande 9a, 6367 AZ Voerendaal, tel. 045-575 3636

Enjoying the good life in South Limburg

The inhabitants of South Limburg have a reputation for enjoying all the good things that life has to offer. So they are often called 'Bourgondiers' (epicureans). Dining lavishly and having fun on (heated) pavement cafes is important learned at mothers' knees already. As a visitor of South Limburg you will certainly notice this.

Exclusive restaurants

Hotel Vue des Montagnes

Wolfsdriesweg 7, 6325 PM Berg en Terblijt, tel. 043-604 0652

Auberge de Rousch, Kloosterkensweg 17, 6419 PJ Heerlen, tel. 045-571 5890

Restaurant Geleenhof, Valkenburgerweg 54, 6419 AV Heerlen, tel. 045-571 8000

Hotel Brughof & Kasteel Erenstein

Oud Erensteinerweg 6, 6468 PC Kerkrade, tel. 045-546 1333

Restaurant Pirandello & Luigi's Trattoria

Tunnelweg 99, 6372 XH Landgraaf, tel. 043-546 4343

Boerderijrestaurant Aan Sjuuteeënjid

Dorpsstraat 74, 6365 BH Schinnen, tel. 046-443 1767

Hotel-Restaurant Slenaker-Vallei

Dorpsstraat 1, 6277 NC Slenaken, tel. 043-457 3541

Romantik Parkhotel het Gulpdal

Dorpsstraat 40, 6277 NE Slenaken, tel. 043-457 3315

Hotel-Restaurant de Leuf

Dalstraat 2, 6367 JS Ubachsberg, tel. 045-575 0226

Château Sint Gerlach, Joseph Corneli Allée 1, 6301 KK Valkenburg, tel. 043-608 8888

Grand Hotel Voncken A Hampshire

Classic Hotel, Walramplein 1, 6301 DC Valkenburg, tel. 043-601 2841

Hotel-Restaurant Tummers, Stationstr. 21, 6301 EZ Valkenburg, tel. 043-601 3741

Hubert Haenen Le Relais Gastronomique

Plenkertstraat 47a, 6301 GL Valkenburg, tel. 043-601 2797

Restaurant 'De Rijke Jansen'

Jan Deckerstraat 1b, 6301 GX Valkenburg, tel. 043-601 4444

Restaurant Le Jardin (Holland Casino)

Kuurpark Cauberg 28, 6301 BT Valkenburg, tel. 043-609 9600

Restaurant Spraakmakend

Valkenburgerweg 6, 6321 GE Wijlre, tel. 043-450 2045

Kasteel Wittem

Wittermer Allee 3, 6286 AA Wittem, tel. 043-450 1208

Restaurant Les Arômes

Botterweck 3, 6286 DA Wittem, tel. 043-451 1364

Farm pavement cafes

Hoeve Scholtissenhof, Heiweg 1, 6351 HP Bochtoltz, tel. 045-544 5260

Bie de Tantes, Wittermerweg 29, 6287 AA Eijs, tel. 043-455 3920

Landgoed Kasteel Rivieren

Retersbekerweg 88-90, 6343 PL Klimmen, tel. 045-574 8707

Landgoed Overste Hof, Overste Hofweg 14, 6372 VG Landgraaf, tel. 045-532 0032

TIP Zorgboerderij A gen Ling, Hellebroek 62a, 6361 AD Nuth, tel. 045-577 8946

Herberg de Bernardushoeve

Mingersborg 20-22, 6367 JX Ubachsberg-Voerendaal, tel. 043-451 1644



Wijngaardshof, Wijngaardsberg 1, 6235 ND Ulestraten, tel. 043-364 2580

Chateau Gilbert, Opfergeltstraat 2D, 6366 BW Wijnandsrade, tel. 06-5345 8200

Pubs

Eetcafé Pension Riekelt, Rijksweg 184, 6247 AN Gronsveld, tel. 043-408 1366

Brasserie De Kroon, Markt 1, 6271 BD Gulpen, tel. 043-450 4194

Café de Tapperij, Bongerd 5, 6411 JL Heerlen, tel. 045-571 0593

Herbergh Bijsmans, Akerstraat 7, 6411 GV Heerlen, tel. 045-571 4066

Café en Zalencentrum De Brandpoort, Hoogstraat 191, 6373 HS Landgraaf, tel. 045-531 5515

Café Herberg Oud Holset, Holset 52/54, 6295 ND Lemiers/Holset, tel. 043-306 6650

Buitenplaats De Mechelerhof/

Hogenboom Vakantieparken, Spetsesweide 5, 6281 BV Mechelen, Tel. 043-4552222

Café Salden, Platz 9, 6141 AT Limbricht, tel. 046-451 5909

Bisschopsmolen, Stenenbrug 1-3, 6211 HP Maastricht, tel. 043-327 0613

Café Tinus, Bovenstraat 9, 6255 AT Noorbeek, tel. 043-457 8099

Biej de Tant, Beekstraat 19A, 6451 CA Schinveld, tel. 045-527 4715

Café Schtad Zitterd, Markt 25, 6131 EL Sittard, tel. 046-451 3643

Café 't Sijterfhoe, Kerkplein 12, 6131 ES Sittard, tel. 046-451 9327

Café-Zaal Bergrust, Vliegenveldweg 21, 6235 NW Ulestraten, tel. 043-364 6995

Café Classic, Cauberg 22, 6301 BT Valkenburg, tel. 043-609 0382

Café Michiel de Ruyter

Th. Dorrenplein 14, 6301 DV Valkenburg, tel. 043-601 4800

Muziek-en Eetcafé 't Jachthoes

Muntstraat 10, 6301 BW Valkenburg, tel. 043-601 3737

Sport-en Recreatiecentrum Polfermolen

Plenkertstraat 50, 6301 GM Valkenburg, tel. 043-601 6173

Wandel-en Fietscafé De Holle Eik

Baron de Selysstraat 4, 6301 JZ Valkenburg, tel. 043-604 4844

Boscafé 't Hijgend Hert

Harles 23, 6294 NG Vijlen, tel. 043-306 2499

Chinese & Indian

Chin. Ind. spec. Restaurant De Chinese

Muur, Commandeurstraat 56, 6281 AN Mechelen, tel. 043-455 2578

Chin. Ind. Restaurant Azië, Tentstraat 47a, 6291 BD Vaals, tel. 043-306 3334

Chin. Ind. Spec. Restaurant Prince Garden

Maastrichterlaan 23, 6291 EK Vaals, tel. 043-306 2043

Restaurant International, Broekhem 71, 6301 HE Valkenburg, tel. 043-601 6811

Bistro

Bie de Tantes, Wittmerweg 29, 6287 AA Eijs, tel. 043-455 3920

Herberg De Smidse, Molenweg 9, 6285 NJ Epen, tel. 043-455 1253

Hotel De Kroon, Wilhelminastraat 8, 6285 AV Epen, tel. 043-455 2120

De Leeuw van Vlaanderen
Kapelaan Pendersplein 8, 6271 BV Gulpen, Tel. 043-8500735

Eetcafé Pension Riekelt, Rijksweg 184, 6247 AN Gronsveld, tel. 043-408 1366

Brasserie De Kroon, Markt 1, 6271 BD Gulpen, tel. 043-450 4194

Café de Tapperij, Bongerd 5, 6411 JL Heerlen, tel. 045-571 0593

Herbergh Bijsmans, Akerstraat 7, 6411 GV Heerlen, tel. 045-571 4066

Auberge De Smockelaer, Givelderweg 2, 6276 PB Heijenrath, tel. 043-457 4445

De Poort van Gravenrode
Dr. Calsstraat 100, 6373 TA Landgraaf, tel. 045-533 1086

Café Herberg Oud Holset
Holset 52/54, 6295 ND Lemiers/Holset, tel. 043-306 6650

Café Tinus, Bovenstraat 9, 6255 AT Noorbeek, tel. 043-457 8099

TIP Herberg In den Haversack, Putstr. 58, 6361 DK Nuth, tel. 045-524 5671

Café Keulen, Peterstraat 25, 6151 EA, Munstergeleen, tel. 046-451 3675

Rest. Station Schin op Geul, Baanweg 1, 6305 PH Schin op Geul, tel. 043-459 9191

Huize Damiaan, Pater Damiaanstraat 38, 6369 SV Simpelveld, tel. 045-544 0000

Restaurant 3-Sprong, Kruiweg 3, 6369 TZ Simpelveld, tel. 043-544 6005

Eetcafé Ernesto's, Markt 32, 6131 EL Sittard, tel. 046-458 1331

Café Scthad Zitterd, Markt 25, 6131 EL Sittard, tel. 046-451 3643

Café 't Sijterfhoes, Kerkplein 12, 6131 ES Sittard, tel. 046-451 9327

Restaurant Den Tempel, Gruizenstraat 27, 6131 EH Sittard, tel. 046-458 2216

Brasserie Het Steinerbos, Dieterenstr 19, 6171 JK Stein, Tel. 046-426 8000

Herberg de Bernardushoeve, Mingersborg 20-22, 6367 JX Ubachsberg-Voerendaal, tel. 043-451 1644

Café-Zaal Bergrust, Vliegenveldweg 21, 6235 NW Ulestraten, tel. 043-364 6995

Wijngaardshof, Wijngaardsberg 1, 6235 ND Ulestraten, tel. 043-364 2580

Brasserie America, Th.Dorrenplein 16, 6301 DV Valkenburg, tel. 043-601 1500

Eetcafé De Bekkerie, Wilhelminalaan 74, 6301 GJ Valkenburg, tel. 043-601 2772

Grand Café Tres Luxx
Th.Dorrenplein 18A, 6301 DV Valkenburg, tel. 043-601 6521

Wilhelminatoren, Neerhem 44, 6301 CJ Valkenburg, tel. 043-609 0609

Muziek- en Eetcafé 't Jachthoes
Muntstraat 10, 6301 BW Valkenburg, tel. 043-601 3737

Wandel- en Fietscafé De Holle Eik
Baron de Selysstraat 4, 6301 JZ Valkenburg, tel. 043-604 4844

Boscafé 't Hijgend Hert, Harles 23, 6294 NG Vijlen, tel. 043-306 2499

B&B A gen Kirk, Vijlenberg 115, 6294 AS Vijlen, tel. 043-306 1963

Greek, Balkan & Cajun

Grieks Rest. Alexander De Grote, Rijksweg 31, 6271 AC Gulpen, tel. 043-450 2721

Grieks Rest. Mykonos, Kampstraat 27, 6371 AA Landgraaf, tel. 045-531 6365

Hotel-Restaurant Valkenhof
Berkelstraat 34, 6301 CC Valkenburg, tel. 043-601 2477

Restaurant Kilise, Plenkertstraat 45, 6301 GL Valkenburg, tel. 043-601 4141

Italian & Spanish

Restaurant Pirandello & Luigi's Trattoria
Tunnelweg 99, 6372 XH Landgraaf, tel. 045-546 4343

Med's Restaurant-Tapasbar, Markt 31, 6131 EL Sittard, tel. 046-400 8811

Hotel-Restaurant Terrasse Gaudi
Grendelplein 12-14, 6301 BS Valkenburg, tel. 043-601 5333

Restaurant Lignano's, Grotestraat Centrum 35, 6301 CW Valkenburg, tel. 043-601 4879



Cookery workshops

Kookpodium, Heerlerweg 160-6, 6433 HX Hoensbroek, tel. 045-528 5505

Jan van den Bongard Delicatessen & Kookstudio, Edisonstraat 21, 6372 AK Landgraaf, Tel. 045-569 1530

Kookstudio Jan van den Bongard
Edisonstraat 19-21, 6372 AK Landgraaf, tel. 045-569 1530

TIP A table, Lyonnetstraat 14, 6221 AP Maastricht, tel. 043-325 6576

Kookschool Pit, Neerhem 69, 6301 CE Valkenburg, tel. 043-459 1842

Cafes

Hoeve Scholtissenhof, Heiweg 1, 6351 HP Bocholtz, tel. 045-544 5260

Restaurant Eureka, Kapelaan Houbenstr. 4, 6285 AB Epen, tel. 043-455 1654

Brasserie De Kroon, Markt 1, 6271 BD Gulpen, tel. 043-450 4194

Eetcafé Pension Riekelt, Rijksweg 184, 6247 AN Gronsveld, tel. 043-408 1366

Grand Café en Restaurant Oppidom
Pancratiusplein 46, 6411 JZ Heerlen, tel. 045-571 1877

Café-Huys 'In de Oude Stroopkokerij', Holset 48, 6295 NC Lemiers, tel. 043-306 6525

Rest. Geulhof, Eperweg 11, 6281 NA Mechelen, tel. 043-455 2522

Rest. Station Schin op Geul, Baanweg 1, 6305 PH Schin op Geul, tel. 043-459 9191

De Koekenpan, Dorpstraat 33, 6265 AK Sint-Geertruid, tel. 043-408 4081

Labyrint Drielandpunt/Taverne de Grenssteen, Viergrenzenweg 97, 6291 BM Vaals, tel. 043-306 5200

Botterweck Banket
Grotestraat Centrum 51, 6301 CW Valkenburg, tel. 043-601 4300

Eetkamer Op d'n Avond, Hovetstraat 3, 6301 CR Valkenburg, tel. 043-601 2484

Grand-Café Lunchroom Joli Coeur
Grotestraat Centrum 32, 6301 CX Valkenburg, tel. 043-601 0000

Haselderhof, Grendelplein 13, 6301 BS Valkenburg, tel. 043-609 0110

't Berkelpoortje, Berkelstraat 8, 6301 CC Valkenburg, tel. 043-609 0937

B&B A gen Kirk, Vijlenberg 115, 6294 AS Vijlen, tel. 043-306 1963

Dutch & French

Hotel Vue des Montagnes
Wolfsdriesweg 7, 6325 PM Berg en Terblijt, tel. 043-604 0652

Het Rembrandthuis, St. Gregoriuslaan 1a, 6442 AE Brunssum, tel. 045-525 4372

Hotel Berghoeve, Julianastraat 20, 6285 AJ Epen, tel. 043-455 1248

Hotel De Vier Jaargetijden
Wilhelminastraat 43, 6285 AT Epen, tel. 043-455 2177

Herberg De Smidse, Molenweg 9, 6285 NJ Epen, tel. 043-455 1253

Hotel De Kroon, Wilhelminastraat 8, 6285 AV Epen, tel. 043-455 2120

De Leeuw van Vlaanderen
Kapelaan Pendersplein 8, 6271 BV Gulpen, Tel. 043-8500735

Restaurant de Lijster, Rijksweg Zuid 172, 6161 BV Geleen, tel. 046-474 3957

Restaurant Eureka, Kapelaan Houbenstr. 4, 6285 AB Epen, tel. 043-455 1654

Restaurant Grand Café D'n Aezel, Groenstraat 133, 6162 EP Geleen, tel. 046-400 0578

Bistro La Bergerie, Gevekerstraat 42, 6191 RP Geveker-Beek, tel. 046-437 4727

De Leeuw van Vlaanderen, Kapelaan Pendersplein 8, 6271 BV Gulpen, Tel. 043-8500735

HCR De Oude Geul, Oude Rijksweg 20, 6271 AA Gulpen, tel. 043-450 3988

Herberg De Zwarte Ruiter, Markt 4, 6271 BD Gulpen, tel. 043-450 4635

Auberge de Rousch, Kloosterkensweg 17, 6419 PJ Heerlen, tel. 045-571 5890

Grand Café en Restaurant Oppidom, Pancratiusplein 46, 6411 JZ Heerlen, tel. 045-571 1877

Herbergh Bijsmans, Akerstraat 7, 6411 GV Heerlen, tel. 045-571 4066

Restaurant Geleenhof, Valkenburgerweg 54, 6419 AV Heerlen, tel. 045-571 8000

Restaurant 't Kastielke, Kasteellaan 3, 6415 HM Heerlen, tel. 045-572 4182

De Poort van Gravenrode, Dr. Calstraat 100, 6373 TA Landgraaf, tel. 045-533 1086

Landgoed Overste Hof, Overste Hofweg 14, 6372 VG Landgraaf, tel. 045-532 0032

La Bonbonniere, Achter de Comedie 1, 6211 GZ Maastricht, tel. 043-350 0935

Buitenplaats De Mechelerhof/Hogenboom Vakantieparken, Spetsesweide 5, 6281 BV Mechelen, Tel. 043-4552222

HR De Oude Brouwerij, Hoofdstraat 53, 6281 BB Mechelen, tel. 043-455 1636

Rest. Geulhof, Eperweg 11, 6281 NA Mechelen, tel. 043-455 2522

Hotel-Restaurant Op de Beek, Hoogbeek 12, 6305 BH, Schin op Geul, tel. 043-459 1312

Party Bowling Centrum Schin op Geul, Walem 7, 6342 PA Schin op Geul, tel. 043-459 3436

Restaurant de Lier, Leiffenderven 3, 6451 PE Schinveld, tel. 045-527 2132

TIP Huize Damiaan, Pater Damiaanstr. 38, 6369 SV Simpelveld, tel. 045-544 0000

Restaurant 3-Sprong, Kruiweg 3, 6369 TZ Simpelveld, tel. 043-544 6005

De Koekenpan, Dorpsstraat 33, 6265 AK Sint-Geertruid, tel. 043-408 4081

Restaurant Den Tempel, Gruizenstraat 27, 6131 EH Sittard, tel. 046-458 2216

Hotel-Restaurant Berg en Dal, Dorpsstr. 19, 6277 NC Slenaken, tel. 043-457 3201

Hotel-Restaurant Slenaker-Vallei, Dorpsstraat 1, 6277 NC Slenaken, tel. 043-457 3541

Romantik Parkhotel het Gulpdal, Dorpsstraat 40, 6277 NE Slenaken, tel. 043-457 3315

Hotel-Restaurant Gerardushoeve, Landsraderweg 12-14, 6276 PH Slenaken-Heijenrath, tel. 043-455 1793

Brasserie Het Steinerbos, Dieterenstr 19, 6171 JK Stein, Tel. 046-426 8000

Le Montagnard, Dirksstraat 2, 6367 HW Ubachsberg, tel. 045-575 4443

Hotel-Restaurant Piethaan, Mamelis 6, 6295 NB Vaals, tel. 043-306 1356

Labyrint Drielandenpunt/Taverne de Grenssteen, Viergrenzenweg 97, 6291 BM Vaals, tel. 043-306 5200

Restaurant Suisse, Maastrichterlaan 63, 6291 EL Vaals, tel. 043-306 2387

Brasserie America, Th.Dorrenplein 16, 6301 DV Valkenburg, tel. 043-601 1500

De Feestgrot, Daalhemerweg 31a, 6301 BJ Valkenburg, tel. 043-601 4738

Eetcafé Op de Koffie, Daalheimerweg 7, 6301 BJ Valkenburg a/d Geul, tel. 043-601 0038

Eetkamer Op d'n Aovend, Hovetstraat 3, 6301 CR Valkenburg, tel. 043-601 2484

Grand-Café Lunchroom Joli Coeur, Grotestraat Centrum 32, 6301 CX Valkenburg, tel. 043-601 0000

Grand Café Tres Luxx, Th. Dorrenplein 18A, 6301 DV Valkenburg, tel. 043-601 6521

Grand Hotel Voncken A Hampshire Classic Hotel, Walramplein 1, 6301 DC Valkenburg, tel. 043-601 2841

TIP Hotel Heineken Hoek, Grotestraat Centrum 5-13, 6301 CV Valkenburg, tel. 043-601 2795

Hotel-Restaurant Tummers, Stationstr. 21, 6301 EZ Valkenburg, tel. 043-601 3741

Hubert Haenen Le Relais Gastronomique, Plenkertstraat 47a, 6301 GL Valkenburg, tel. 043-601 2797

Kasteel Oost / Restaurant La Diva, Oosterweg 36, 6301 PX Valkenburg, tel. 043-609 0099

Restaurant Amadeus, Grendelplein 9, 6301 BS Valkenburg, tel. 043-601 6846

Restaurant Brazza, Grotestraat Centrum 18, 6301 CX Valkenburg a/d Geul, tel. 043-601 2300

Restaurant Calypso, Muntstraat 2, 6301 BW Valkenburg, tel. 043-601 2450

TIP Restaurant De Gouden Leeuw, Grotestraat Centrum 49, 6301 CW Valkenburg, tel. 043-601 2579

Restaurant De Munt, Muntstraat 7, 6301 BW Valkenburg, tel. 043-601 2018

TIP Restaurant-Grand Café Hardy's, Grotestraat 14, 6301 CX Valkenburg, tel. 043-601 0516

Restaurant La Mangerie, Grotestraat Centrum 32, 6301 CX Valkenburg, tel. 043-601 3439

Restaurant Le Jardin (Holland Casino), Kuurpark Cauberg 28, 6301 BT Valkenburg, tel. 043-609 9600

Restaurant Terrasse Gaudi, Grendelplein 12-14, 6301 BS Valkenburg, 043-601 5333

TIP Stadsrestaurant, Grotestr. Centrum 23, 6301 CV Valkenburg, tel. 043-601 6106

't Berkelpoortje, Berkelstraat 8, 6301 CC Valkenburg, tel. 043-609 0937

Thermae 2000, Kuurpark Cauberg 27, 6301 BT Valkenburg, tel. 043-609 2000

Restaurant 'De Rijke Jansen', Jan Deckerstraat 1b, 6301 GX Valkenburg, tel. 043-601 4444

Hotel-Restaurant Vijlterhof, Hilleshagerweg 2, 6294 AP Vijlter, tel. 043-306 1710

Restaurant Spraakmakend, Valkenburgerweg 6, 6321 GE Wijlre, tel. 043-450 2045

HR In den Roden Leeuw van Limburg, Wittermer Allee 28, 6286 AB Witterm, tel. 043-450 1274

Kasteel Witterm, Wittermer Allee 3, 6286 AA Witterm, tel. 043-450 1208

Restaurant Les Arômes, Botterweck 3, 6286 DA Witterm, tel. 043-451 1364

Hostellerie The Kings Head Inn, Dorpsstraat 4, B-3793 Teuven-Voeren, tel. 0032-43811324

Pancakes

Restaurant Eureka, Kapelaan Houbenstr. 4, 6285 AB Epen, tel. 043-455 1654

TIP De Pannekoekenmolen, Molenweg 2a, 6271 JN Gulpen, tel. 043-450 3963

Overste Hof, Overste Hofweg 14, 6372 VG Landgraaf, tel. 045-532 0032

De Koekenpan, Dorpsstraat 33, 6265 AK Sint-Geertruid, tel. 043-408 4081

Hotel-Restaurant Gerardushoeve, Landsraderweg 12-14, 6276 PH Slenaken-Heijenrath, tel. 043-455 1793

Haselderhof, Grendelplein 13, 6301 BS Valkenburg, tel. 043-609 0110

MFC Ravensbos, Ravensbos 1b, 6301 PR Valkenburg, tel. 045-405 2555

Snackbars and Fastfood

McDonald's Restaurant, Bongerd 1, 6411 JL Heerlen, tel. 045-571 6428

McDonald's Restaurant, Brunsummerweg 138, 6373 EZ Landgraaf, tel. 045-531 3013

Hotel Heineken Hoek, Grotestraat Centrum 5-13, 6301 CV Valkenburg, tel. 043-601 2795


Fish specialities

TIP Hotel-Visrestaurant Residentie Slenaeken, Dorpsstraat 34, 6277 NE Slenaken, tel. 043-457 3363

Restaurant De Munt, Muntstraat 7, 6301 BW Valkenburg, tel. 043-601 2018

Belgium

Hostellerie The Kings Head Inn, Dorpsstraat 4, B-3793 Teuven-Voeren, tel. 0032-43811324



Holland Casino Valkenburg
Offering you the perfect
opportunity for getting
away from it all

- Conditions for admission: valid ID, minimum age 18 years.
- Opening hours Holland Casino: Daily from 12.00 to 03.00 hours.